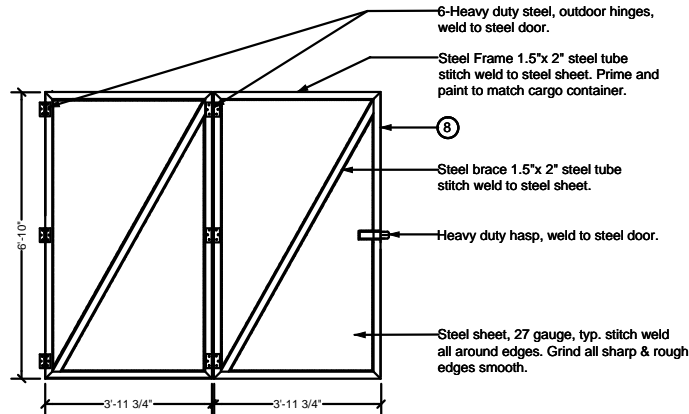
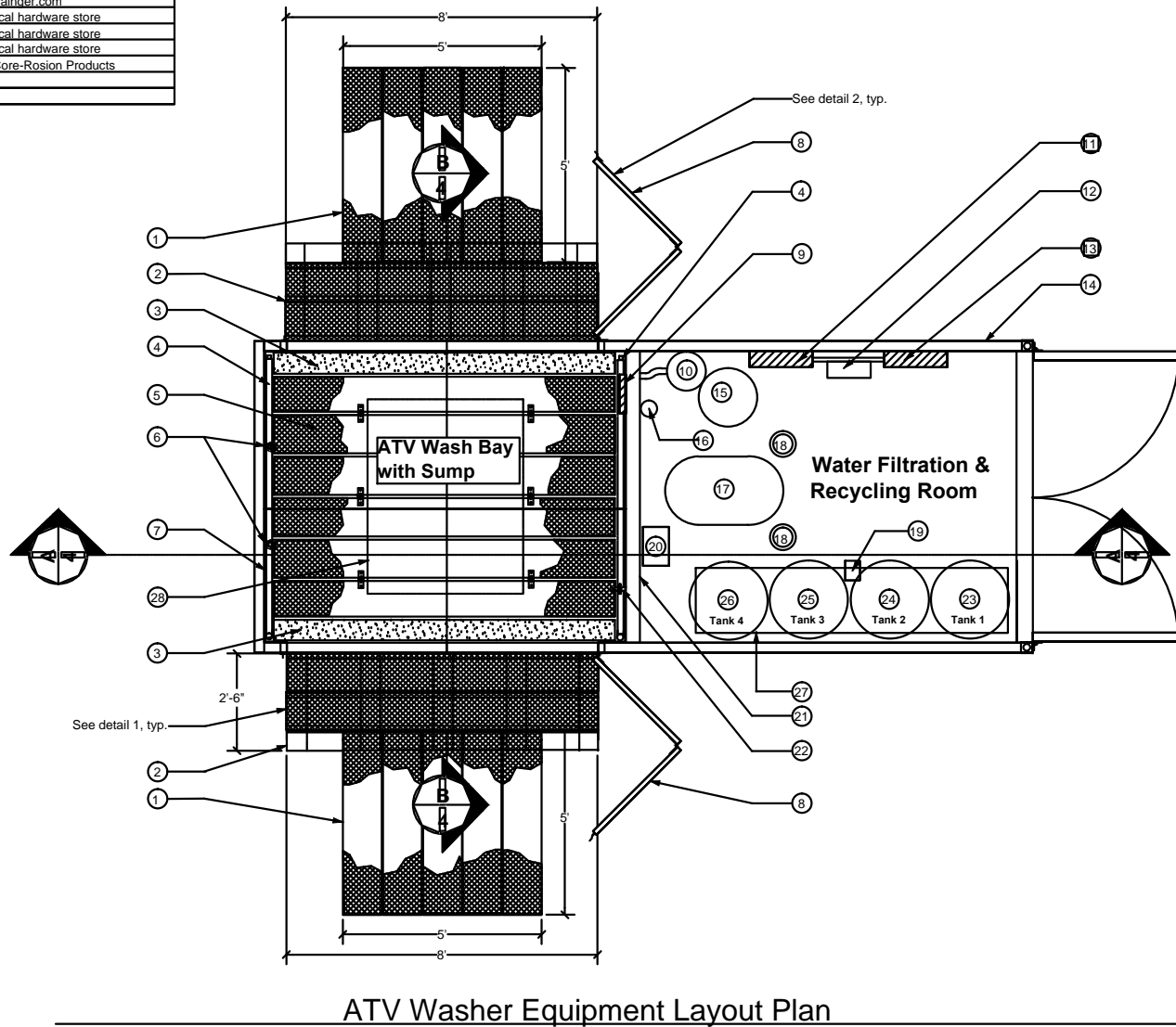


Materials List				
Item	Quantity	Description	Part #	Supplier
1	10	Ramp, Grip Strut Safety Grating-1.5" D x 11.75" W x 5' L	51512-U	*Directmetals.com
2		Ramp Base- 6 x 6 x 8' timbers with a steel grate deck.		Local Lumber store
3		see detail 1, see item 3 this sheet.		*Directmetals.com
3	2	Spacers, recycled plastic lumber-2x8x10' L * "Fiberforce" by- Bedford Technologies.		*www.plasticboards.com
4	2	PVC water pipe 1.5" Sch. 80		Local hardware store
5	6	Floor, Grip Strut Safety Grating 1.5" D x 11.75" W x 10' L	51512-U	*Directmetals.com
6	2	Eyebolts .5" x 1.5" I.D. (motorcycle strap hold)		*Chicagohardware.com
7	5	Fiberglass shower panels 4' x 8' on wash-bay interior walls.		Local hardware store
8	2	Double Swing Steel Doors. See Detail 2		Custom steel fabricator
	12	Heavy duty steel outdoor hinges 4" x 4"		
	8	Steel Frame -8' x 1.5" x 2" steel tube		
	4	Steel brace -8' x 1.5" x 2" steel tube		
	2	Heavy duty hasps-8" x 2"		
	4	Steel sheet, 27 gauge-3' 11 3/4" x 6' 9 1/2"		
9	1	Control Panel for washer		Local hardware store
10	1	Wet/Dry vacuum		Local hardware store
11	1	Timer Panel		Local hardware store
12	1	High pressure pump (hand carry pressure washer kit type)	1500A	*Ultimatewasher.com
13	1	Cutler Hammer 125 amp.max. electric panel		Local hardware store
14	1	ISO Shipping container 8' (H) x 8' (W) x 20' long		*Martin Container-container.com
15	1	Drum with pump 18"-30 gallon		*ruwac.com
16	1	Centrifugal separator	ILB	*Lakos.com
17	1	*RUWAC main vacuum- ATV wash Down System SO#8094	ELUSFORESTSERVICE	*ruwac.com
18	2	50 micron filters	X100B	fsifilters.com
19	1	Primary Pump-*Flojet	4300-043A	*dultmeier.com
20	1	Flush Pump-*Davton1.5 HP Centrifugal Pump	2ZVU6	*grainder.com
21		Partition wall- 2x4x8' stud wall @ 16" o.c. & Plywood- 4 x 8 x .5" thick and Fiberglass shower siding		Local hardware store
22	1	Low pressure hose bib		Local hardware store
23-26	4	100 gallon Polypropylene tank	44000115	*Core-Rosion Products
Note: * Or approved equal.				

Notes

- Entrance/Exit Ramp, (grated steel).
- Entrance/Exit ramp base. Pressure treated exit ramp base 6 x 6 timbers. Steel grate deck with 6x6 timber supports see detail 1.
- Spacer 2x8' Trex or approved equal, cut to size.
- Flush water pipe. Run along wall. see detail 1 sheet 13.
- Steel grate floor over poly. sump pan.
- Eye Bolts with stabilizer motorcycle cam buckle straps
- Install a fiberglass shower siding and waterproof on all interior walls in wash bay. Bond to plywood with waterproof adhesive.
- Entrance/exit folding steel door. 27 gauge steel hinge doors with heavy duty hasp lock, see detail 2.
- Washer Control Panel.
- Wet/dry vacuum.
- Timer panel.
- High pressure pump.
- Cutler Hammer 125 amp.max. electric panel.
- ISO shipping container L-20', W-8', H-8'-6" w/wood floor.
- Drum 18"-30 gallon with pump.
- Centrifugal separator.
- RUWAC main vacuum
- 50 micron filter units.
- Primary pump.
- Flush pump.
- Framed wall 2' x 4', paneled w/1/2" plywood on wash bay side with a fiberglass shower siding and waterproof finish.
- Low pressure hose bib.
- 100 gallon watertank (sump flushing) on 24" support rings. Tank pumps located beneath tank stand. (see sheet 7) tank #1.
- 100 gallon water settling tank on 24" support rings. Water tank pumps located beneath tank stand.(see sheet 7) Tank #2
- 100 gallon fresh water tank on 24" support rings. Water tank pumps located beneath tank stand.(see sheet 7) Tank #3
- 100 gallon fresh water tank on 24" support rings. Water tank pumps located beneath tank stand. (see sheet 7) Tank #4
- Lower Tank Support. (See sheet 8)
- Poly. sump outline.

Callout Key

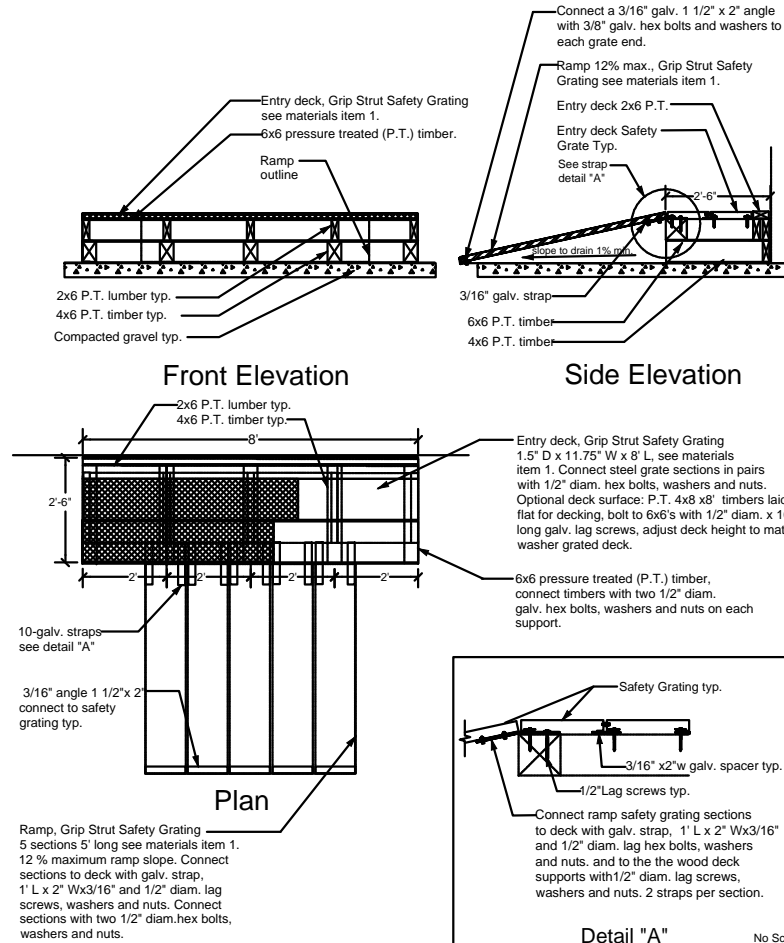


Elevation

2

Double Swing Steel Door Detail

Scale 1/2"=1'



1

ATV Washer Ramp Detail

Scale 1/2"=1'

NOT TO SCALE



U.S. DEPARTMENT OF AGRICULTURE  
FOREST SERVICE  
**RECREATION FACILITIES**  
DESIGN CATALOG

DRAWING NAME

**ATV WASHER**  
EQUIPMENT LAYOUT

WS\_WSHR\_ATV\_01-02.pdf

BUILT ENVIRONMENT IMAGE GUIDE PROVINCE(S) (BEIG)

- ☒ ALL ☐ NORTHEAST ☐ SOUTHEAST COASTAL ☐ GREAT PLAINS ☐ NORTH PACIFIC  
☐ LAKES ☐ SOUTHEAST MOUNTAIN ☐ ROCKY MOUNTAIN ☐ SOUTHWEST

RECREATION OPPORTUNITY SPECTRUM (ROS)

- ☒ PRIMITIVE ☒ SEMI-PRIMITIVE MOTORIZED ☒ RURAL  
☒ SEMI-PRIMITIVE NON-MOTORIZED ☒ ROADED NATURAL ☒ URBAN

SHEET

**2** OF **14**