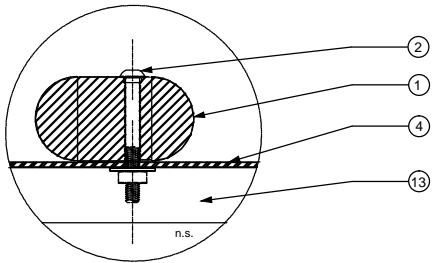


Notes: ①

1. *Jim Bouy Life Preserver, connect 4-2" W preservers to top steel plate of water tank support see detail 2.
2. Carriage bolts- 1/2" D x 4" L, install bolts to secure life preservers. Drill a .5" pilot hole in the life preserver for all .5" diam. carriage bolts see note 1.
3. Cut-Out in top steel plate. Cut 4- 4" diam. round hole openings in the top steel plate of tank stand for tank plumbing, see plan.
4. Top Plate for steel tube frame top, .188" (3/16") thick, x 2' W x 8' L, mild steel plate. **stitch weld to top tube frame all around top and bottom.
5. Plywood floor by container manufacturer, verify plywood thickness to select an appropriate stand leg lag screw connector length.
6. Frame top, steel tube - 2" H x 3" W x 8' L, wall tubing .188" thick, **weld to steel tube legs and stitch weld to top steel plate. Fabricate with tube framing all around, 4 sides.
7. Frame legs, steel tube- 2" H x 3" W x 10" L, .188" thick steel tube. **Weld legs to frame top frame support. Weld "L" brackets to bottom of legs, connect to plywood floor with 5/8" lag screws see 8.
8. Side Angle "L" Bracket - Weld .25" thick "L" 2" WX 4" L steel bracket to leg bottoms, and pre-drill a 3/4" hole for lag screws. Connect brackets to plywood floor with 5/8" Diam. x 1" L- lag screw min. Verify thickness of container plywood floor and select an appropriate screw length.
9. Primary Pump Bracket. Form aluminum bracket per detail 1 dimensions. Connect Pump bracket to plywood floor with 1/2" D. x 1" L, hot dipped galvanized lag screws, see detail 1. Pre-drill 5/8" holes in bracket for lag screws.
10. Lag screws see note 9. Pre-drill 1/4" pilot holes in plywood flooring for lag screws.
11. Primary pump-*Flojet 4300-043, see detail 1.
12. Nuts and bolts, fasten pump to bracket by pump manuf.
13. Frame End-Steel tubing 2" H x 3" W x .188" thick wall tubing. **Weld to top plate and legs. see note 4,6.

Note:**Grind all sharp edges and corners to a smooth finish.

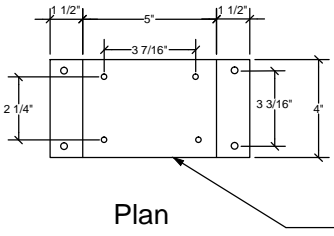
Materials List				
Item	Quantity	Description	Part #	Supplier
1	4	Jim Bouy Life Preserver 2' Diam *Model JBW-24	JBW-24	*jimbuoy.com
2	16	1/2" D x 4" L carriage bolts with washers and hex nuts		local steel supply store
3	-	Cut-outs in steel plate , see Note 3.		---
4	1	Top plate 2' W x 8' L .0.188" thick - mild steel plate		local steel supply store
5	-	Plywood floor, see note 5.		---
6	2	Frame top 2" H x 3" W x 8' long .0.188" rectang. steel tube		local steel supply store
7	2	Frame legs 1.5" x 3" x 10" long, 0.188" rectang. steel tube		local steel supply store
8	4	Side Angle "L" Bracket 2"Wx 4"L x 3/16" thick steel bracket		local steel supply store
9	1	Bracket, alum. plate 0.188" thick 4" W x 15" L, see detail 1		local metal supply store
10	4	1/2" x 1" lag screws with washers		local hardware store
11	1	Primary pump *Flojet Pump	4300-043	*Dultmeier
12	4	5/16" diam. bolts and nuts supplied with w/pump kit.		*Dultmeier
13	2	Frame end 2"H x 3"W x 14" long, 0.188" rectang. steel tube		local steel supply store
* Or approved equal.				



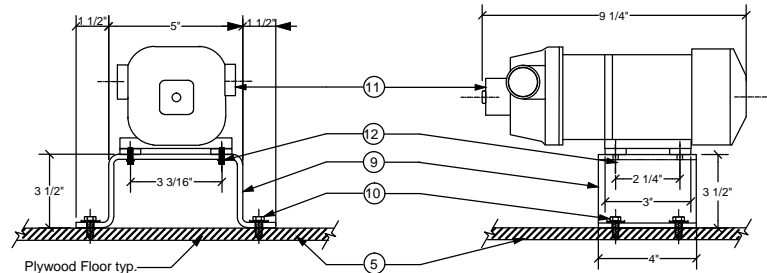
Section

2 Life Preserver Bolt Connector Detail

No Scale



Plan



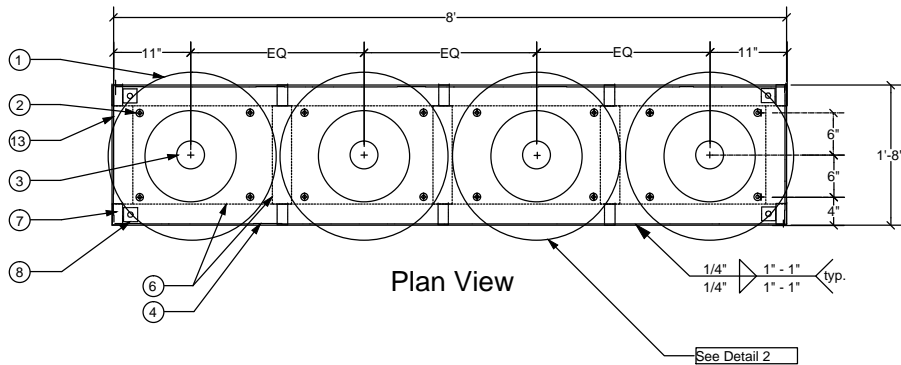
Front

Right Side

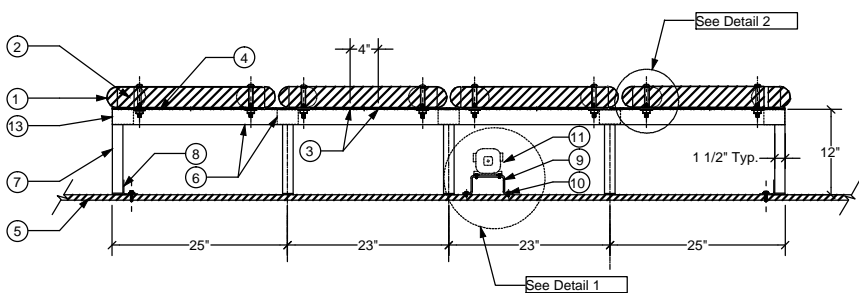
NOT TO SCALE

1 Primary Pump Bracket Detail

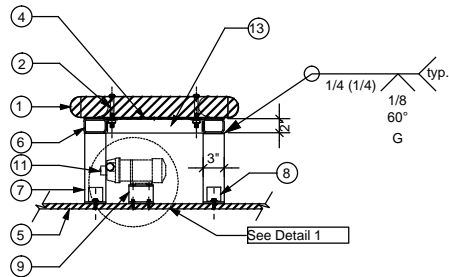
No Scale



Plan View



Front View



Right Side View

Lower Tank Support

Scale 1"=1'



U.S. DEPARTMENT OF AGRICULTURE
FOREST SERVICE
RECREATION FACILITIES
DESIGN CATALOG

DRAWING NAME

ATV WASHER
LOWER TANK SUPPORT

WS_WSHR_ATV_01-08.pdf

BUILT ENVIRONMENT IMAGE GUIDE PROVINCE(S) (BEIG)

- ☒ ALL ☐ NORTHEAST ☐ SOUTHEAST COASTAL ☐ GREAT PLAINS ☐ NORTH PACIFIC
☐ LAKES ☐ SOUTHEAST MOUNTAIN ☐ ROCKY MOUNTAIN ☐ SOUTHWEST

RECREATION OPPORTUNITY SPECTRUM (ROS)

- ☒ PRIMITIVE ☒ SEMI-PRIMITIVE MOTORIZED ☒ RURAL
☒ SEMI-PRIMITIVE NON-MOTORIZED ☒ ROADED NATURAL ☒ URBAN

SHEET

8 OF **14**