

Materials List				
Item	Quantity	Description	Part #	Supplier
1	1	Stand frame-mild steel square tubing -2" sq. x 0.188" thick typ.		local steel supply store
2	2	Lift lug, mild steel tube, 1" OD, 2" L, 0.125" wall, weld to leg.		local steel supply store
3	2	Support blocks .75" Hx 2" Wx 10" L, aluminum block, 6061		local steel supply store
4	4	Steel screws-5/16"-24 see note 4		local steel supply store
5		See notes.		

Notes: ①

1. *Vacuum stand frame- fabricate frame including top supports, side supports, leg supports and angle braces with 2" square 0.188" wall, mild steel tube.

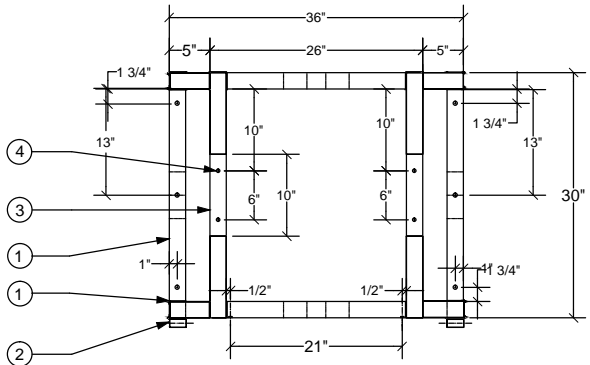
2. Lift lugs- 1" OD, 2" L, 0.125" wall, mild steel tube, weld 1 lift lug on each side of stand leg per plan.

3. Support blocks .75" Hx 2" Wx 10" L, aluminum block, 6061. connect 2 support blocks to top support with 5/16" steel screws, see note 4.

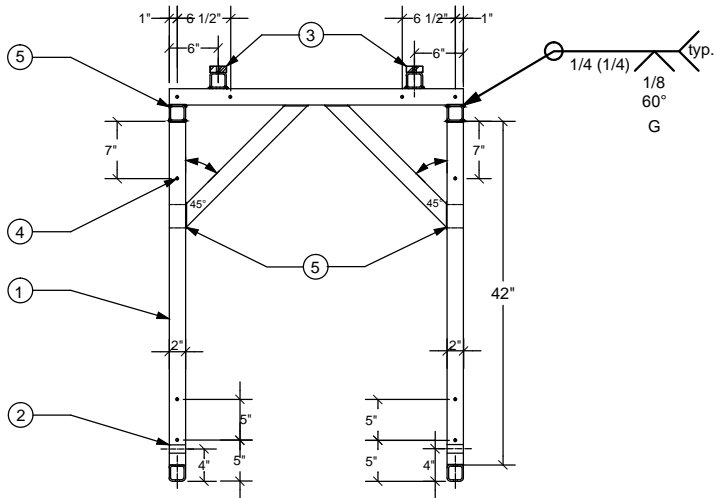
4. Drill and tap 5/16-24, typ. Connect filters and pump support bracket to stand with 5/16" screws typ. see details 1,2 sheet 10.

5. Weld all lap and butt joints.

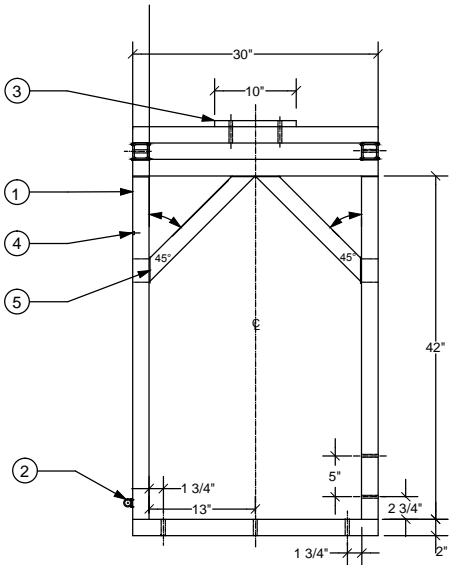
Note:*Grind all sharp edges and corners to a smooth finish.



Plan View



Front View



Side View

Vacuum Stand

Scale 1"=1'

NOT TO SCALE

