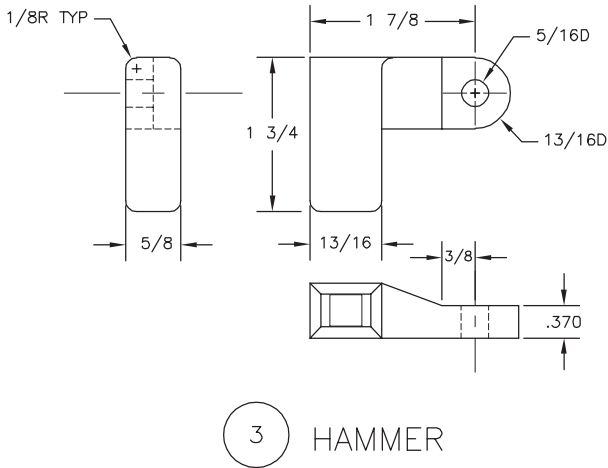
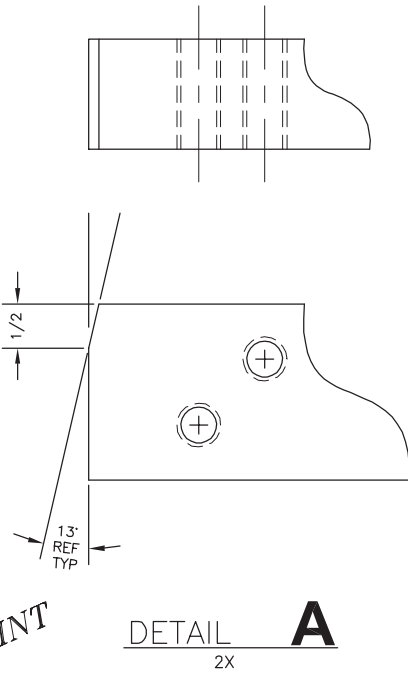
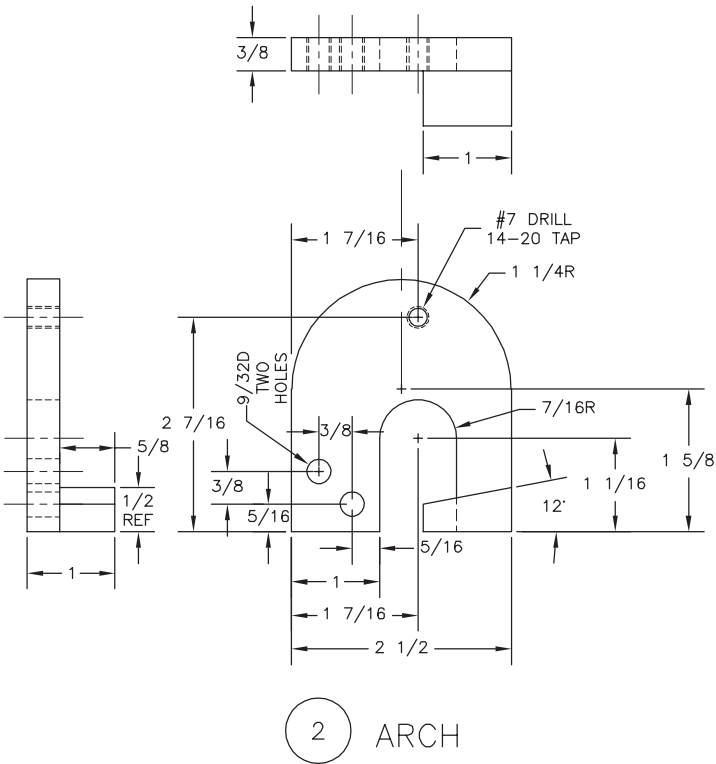
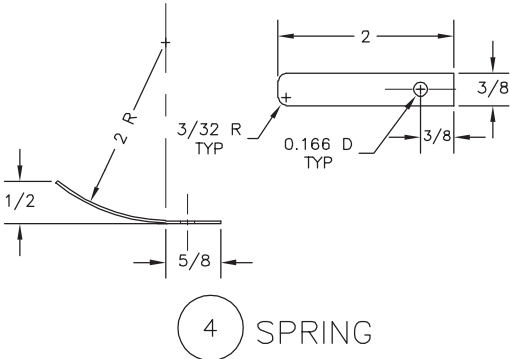
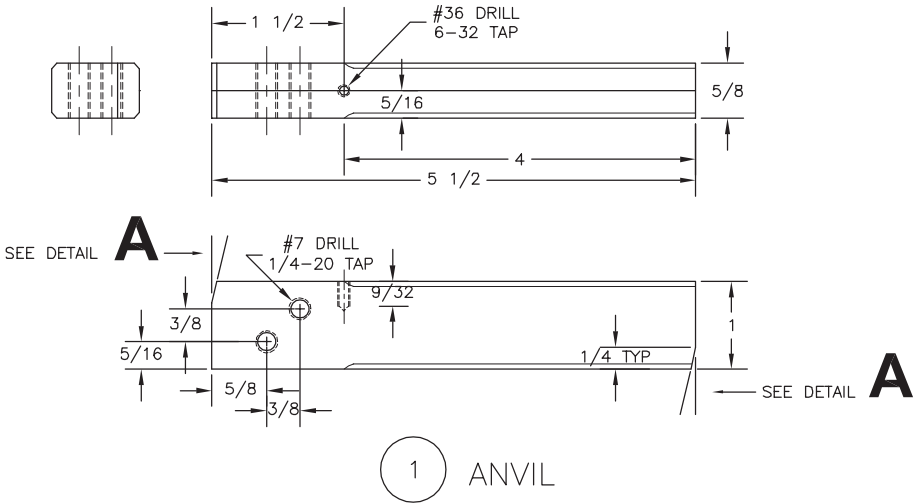
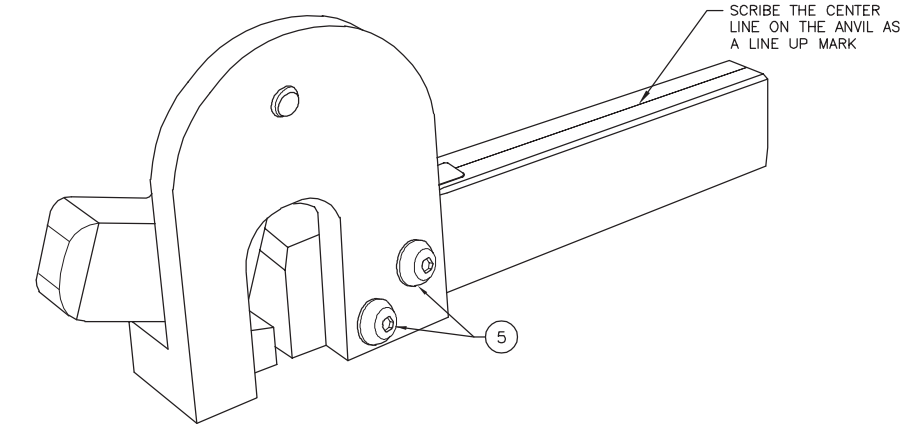


MATERIAL LIST			
NO	PART NAME	REQD	MATERIAL-DESCRIPTION
1	ANVIL	1	5/8 X 1 AISI TYPE 01 GROUND FLAT STOCK
2	ARCH	1	1-INCH PLATE A-36
3	HAMMER	1	5/8 X 1-3/4 AISI TYPE 01 GROUND FLAT STOCK
4	SPRING	1	0.028 X 3/8 SPRING STEEL
5	FASTENER	2	1/4-20 X 3/4 BUTTON HEAD CAP SCREW
6	HAMMER PIVOT	1	5/16 X 3/8 SOCKET HEAD SHOULDER SCREW
7	FASTENER	1	6-32 X 1/4 BUTTONED CAP SCREW

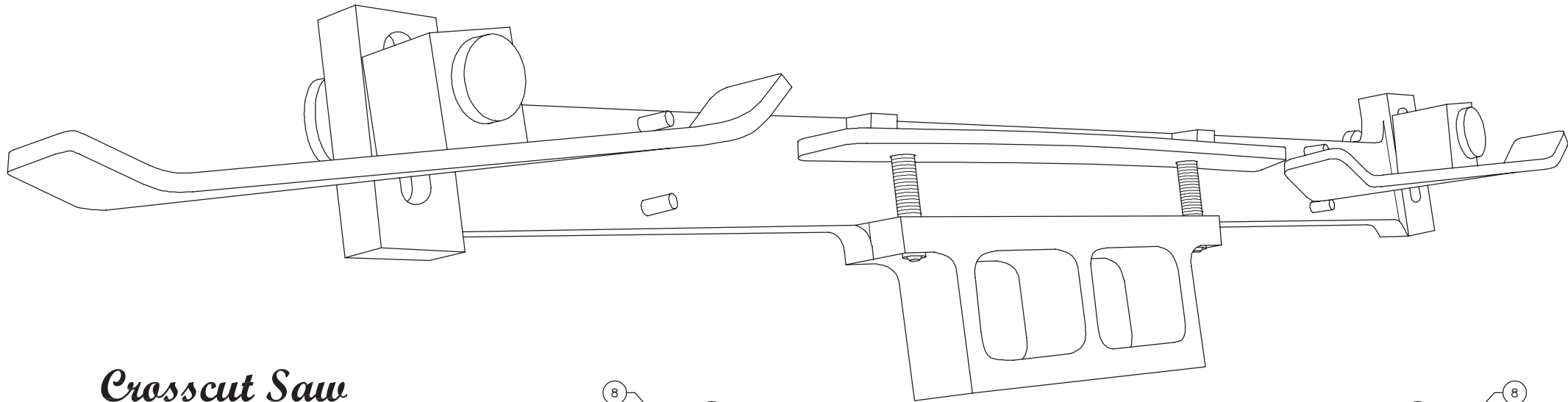
# Crosscut Saw Tooth-Set Tool

THIS TOOL IS A COPY OF AN EARLY CROSSCUT SAW TOOL.



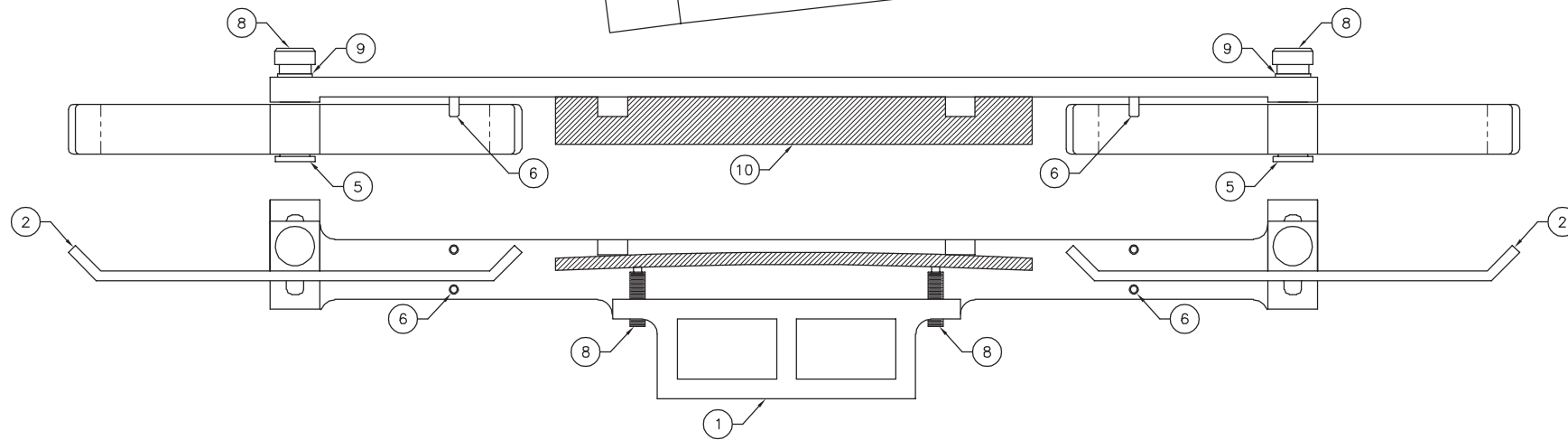
THIS IS A REDUCED PRINT

UNLESS OTHERWISE SPECIFIED		DATE	REVISION	BY
TOLERANCES:		<b>U.S. Department of Agriculture Forest Service TECHNOLOGY &amp; DEVELOPMENT CENTER Missoula, MT</b>		
FRACTIONS +/- _____				
DECIMALS +/- _____				
ANGLES +/- _____				
DIMENSIONS ARE IN INCHES BREAK SHARP EDGES		<i>Traditional Tool Series</i>  CROSSCUT SAW TOOTH-SET TOOL  998-01.dwg		
DRAWN B.KILROY				
DESIGNED MORIN				
CHECKED B.KILROY				
APPROVED B.BECKLEY		SHEET 1 OF 1		
SCALE FULL & NOTED				
DATE JUL 2002		MTDC-998		

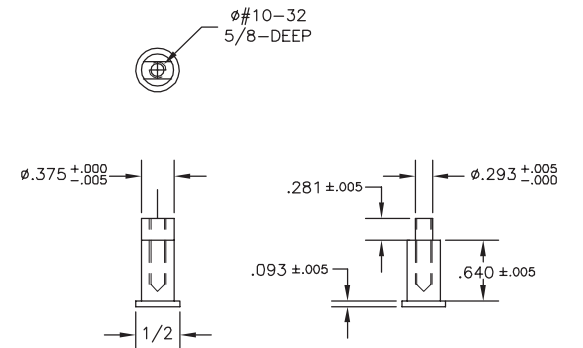


## Crosscut Saw Tooth File Guide

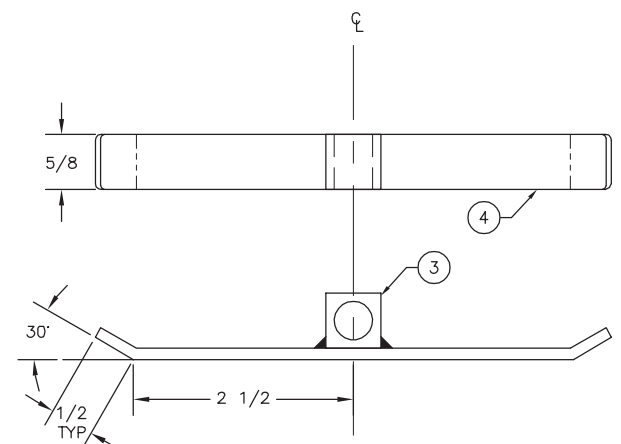
THIS TOOL IS A MODIFIED COPY  
OF AN EARLY TOOTH FILE TOOL.



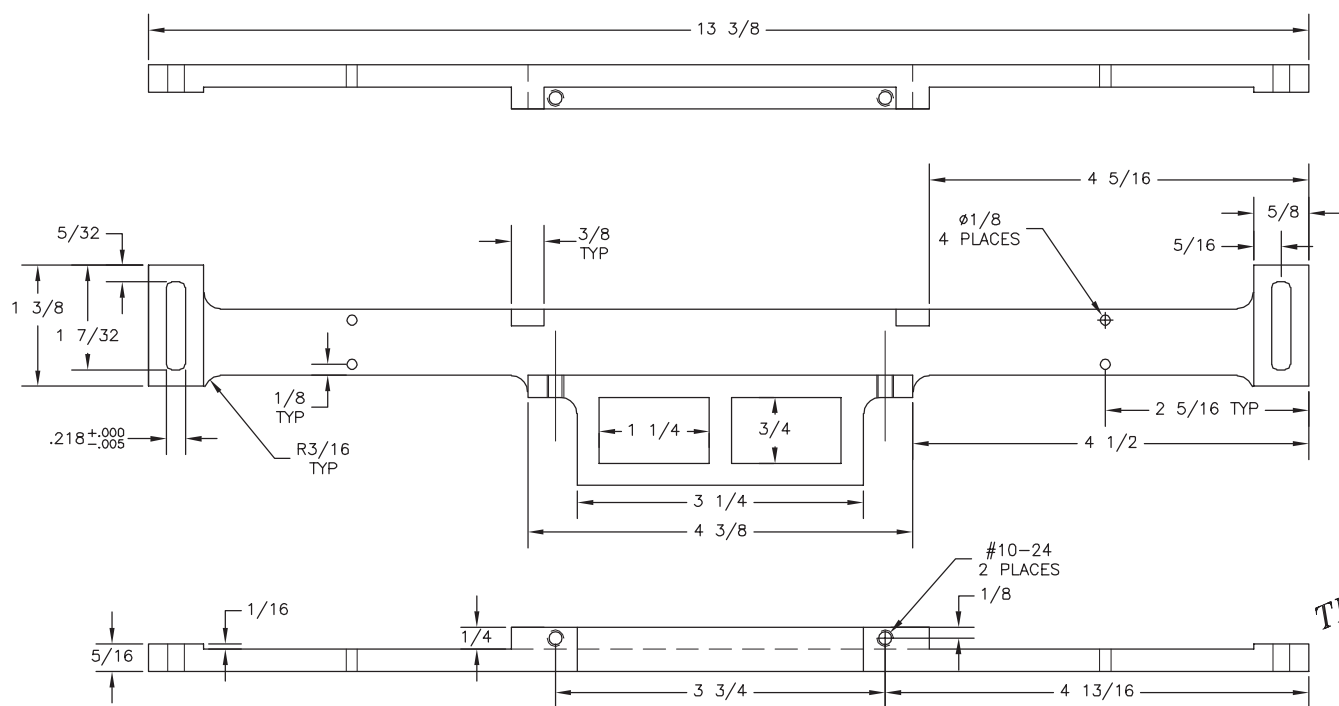
MATERIAL LIST			
NO	PART NAME	REQD	MATERIAL-DESCRIPTION
1	FRAME	1	6061 T-6 ALUMINUM
2	SHOE ASSEMBLY	2	PARTS 3 & 4
3	SHOE PIVOT	2	MILD STEEL
4	SHOE ARM	2	A2 TOOL STEEL, HARDENED
5	SHOE NUT	2	1/2 X 1 LG ROUND ROD, MILD STEEL
6	STOP	2	1/8 X 7/16 LG DOWEL PIN
7	SCREW	2	#10-24 X 3/4 LG STANDARD SOCKET CUP POINT
8			SET SCREW
	SCREW	2	#10-32 X 5/8 LG KNURLED THUMB SCREW, BRASS
9			McMASTER-CARR PART NO. 988164A252
	WASHER	2	#10-32 FLAT WASHER, BRASS
10	FILE	1	6-1/4 LG



4 SHOE NUT

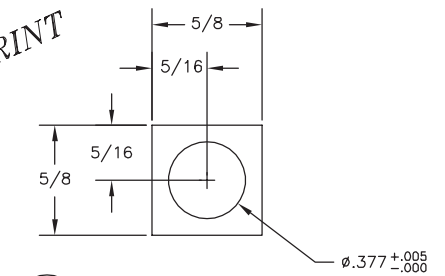


2 SHOE ASSEMBLY  
WELDED CONSTRUCTION



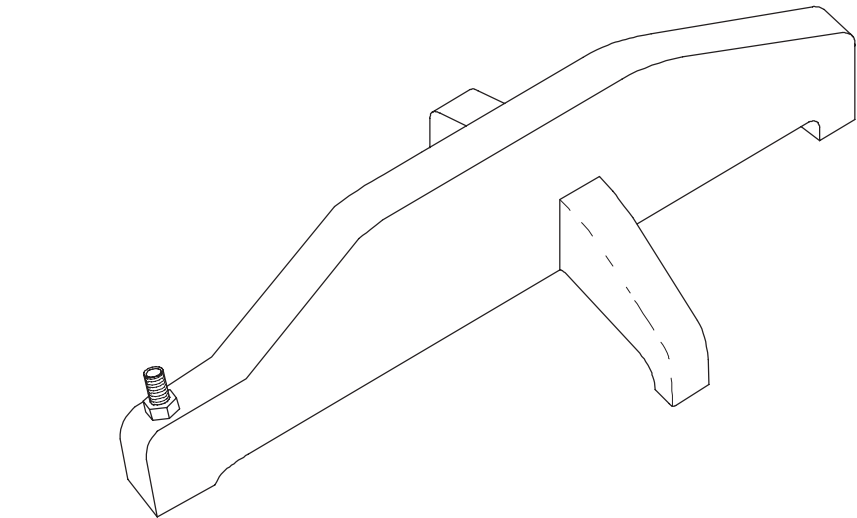
1 FRAME

THIS IS A REDUCED PRINT



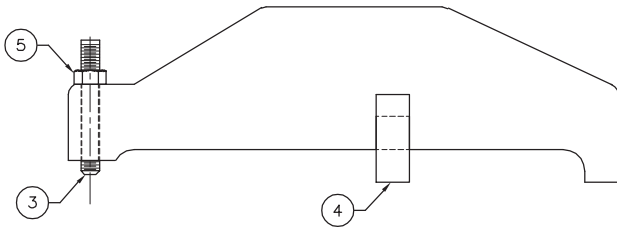
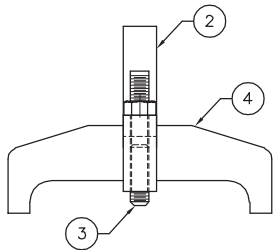
3 SHOE PIVOT  
SCALE=2X

UNLESS OTHERWISE SPECIFIED		DATE		REVISION		BY	
TOLERANCES:		<b>U.S. Department of Agriculture Forest Service TECHNOLOGY &amp; DEVELOPMENT CENTER Missoula, MT</b>					
FRACTIONS +/-							
DECIMALS +/-							
ANGLES +/-							
DIMENSIONS ARE IN INCHES BREAK SHARP EDGES		<b>Traditional Tool Series</b> CROSSCUT SAW JOINTER (TOOTH FILE GUIDE)					
DRAWN KILROY/MUCCI							
DESIGNED HARDING							
CHECKED X							
APPROVED X		1013-01.dwg					
SCALE FULL							
DATE JAN 2005		SHEET 1 OF 1		MTDC-1013			

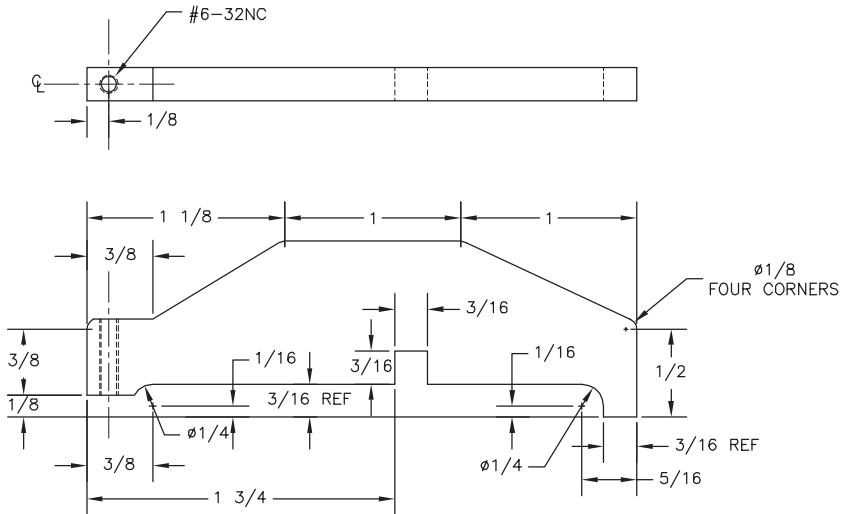
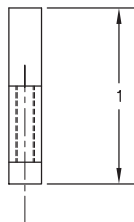
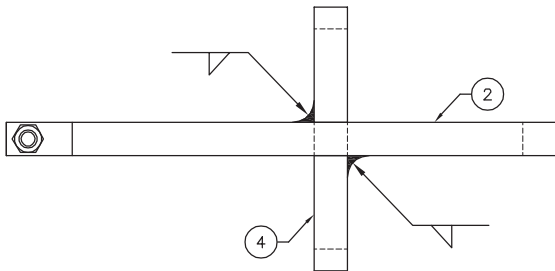


# Crosscut Saw Adjustable Spider Gauge

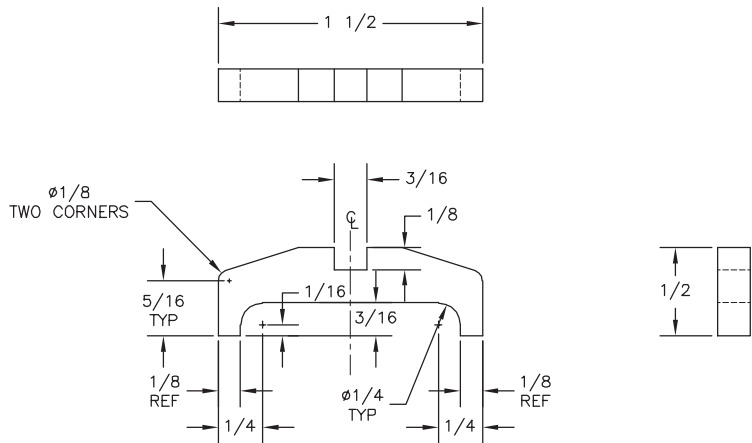
THIS TOOL IS A MODIFIED COPY OF  
AN EARLY SPIDER GAUGE TOOL.



1 RAKE SPIDER ASS'Y  
2X SCALE



2 ROCKER  
2X SCALE



4 LEGS  
2X SCALE

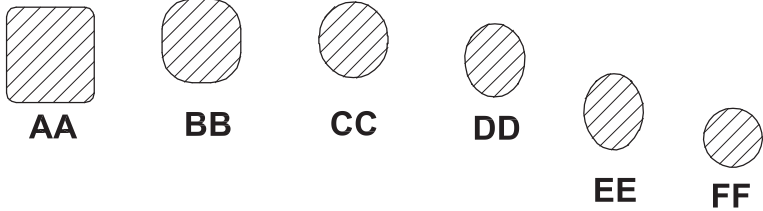
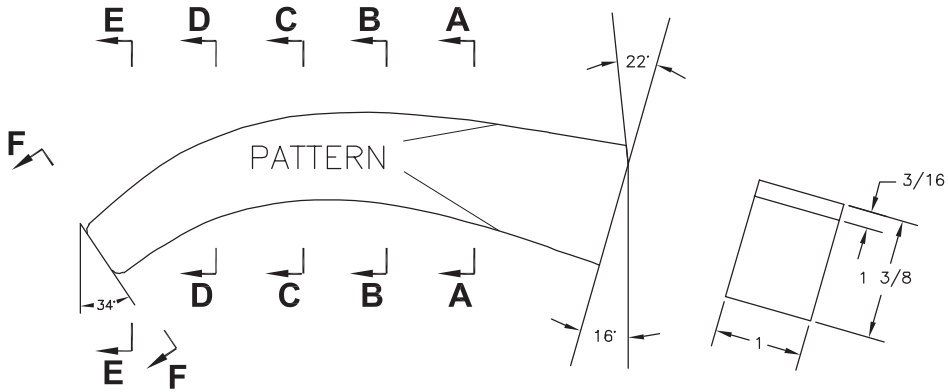
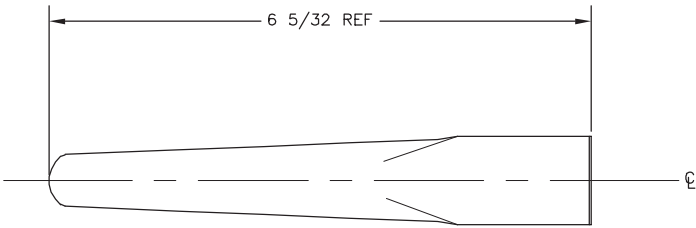
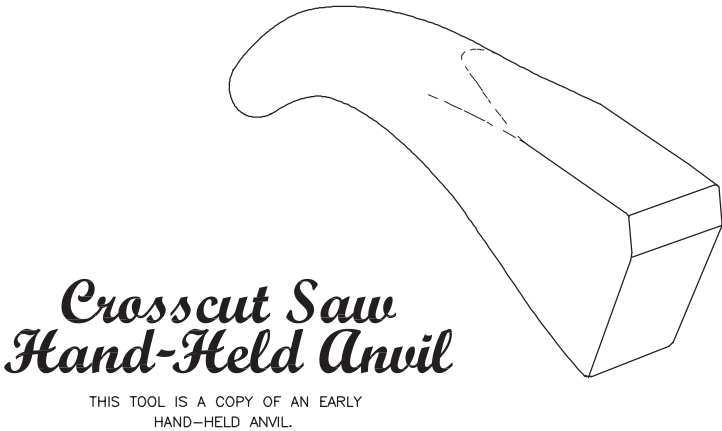
MATERIAL LIST			
NO	PART NAME	REQD	MATERIAL-DESCRIPTION
1	RAKE SPIDER ASS'Y	1	SEE PARTS 2 THRU 4
2	ROCKER	1	3/16 X 1 COLD FORM STRIP
3	SET SCREW	1	6-32 X 3/4 SOCKET CUP POINT SET SCREW
4	LEG	1	3/16 X COLD FORM STRIP
5	NUT	1	6-32 HEX NUT

THIS IS A REDUCED PRINT

UNLESS OTHERWISE SPECIFIED		DATE	REVISION	BY
TOLERANCES:		<b>U.S. Department of Agriculture Forest Service TECHNOLOGY &amp; DEVELOPMENT CENTER Missoula, MT</b>		
FRACTIONS +/- _____				
DECIMALS +/- _____				
ANGLES +/- _____				
DIMENSIONS ARE IN INCHES BREAK SHARP EDGES		<b><i>Traditional Tool Series</i></b> <b>ADJUSTABLE SPIDER GAUGE</b>		
DRAWN MUCCI				
DESIGNED HARDING				
CHECKED				
APPROVED		1014-01.dwg		
SCALE FULL		SHEET 1 OF 1		
DATE JAN 2005		MTDC-1014		

MATERIAL LIST			
NO	PART NAME	REQD	MATERIAL-DESCRIPTION
1	ANVIL	1	GRADE 0-1 OIL HARDING TOOL STEEL
			FLAT STOCK 1 X 2 X 6-1/2

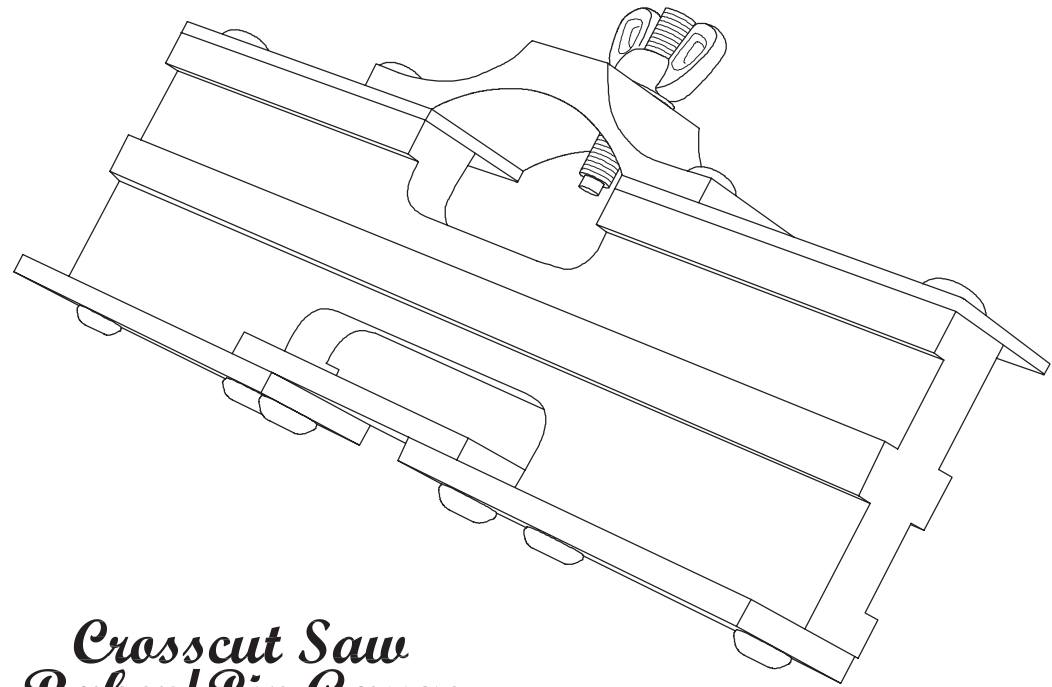
NOTES:  
 BREAK ALL EDGES EXCEPT FACE.  
 HANDLE SHOULD BE SMOOTH BUT NOT POLISHED SURFACE.



1 ANVIL

THIS IS A REDUCED PRINT

UNLESS OTHERWISE SPECIFIED		DATE	REVISION	BY
TOLERANCES:		<b>U.S. Department of Agriculture Forest Service TECHNOLOGY &amp; DEVELOPMENT CENTER Missoula, MT</b>		
FRACTIONS +/- _____				
DECIMALS +/- _____				
ANGLES +/- _____				
DIMENSIONS ARE IN INCHES		<i>Traditional Tool Series</i> CROSSCUT SAW HAND—HELD ANVIL		
BREAK SHARP EDGES				
DRAWN KILROY/MUCCI				
DESIGNED KILROY				
CHECKED KILROY		1018-01.dwg SHEET 1 OF 1 MTDC-1018		
APPROVED X				
SCALE FULL				
DATE FEB 2003				

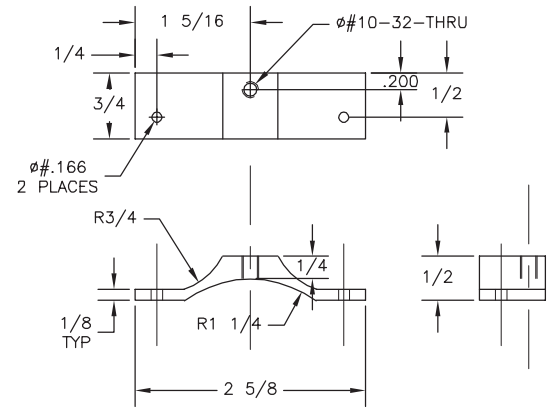


**Crosscut Saw  
Raker/Pin Gauge**

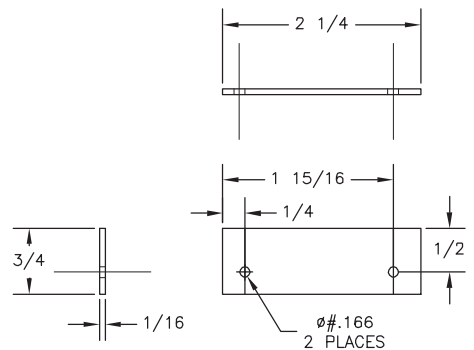
THIS TOOL IS A MODIFIED COPY OF AN EARLY  
CROSSCUT SAW TOOL

THIS IS A REDUCED PRINT

MATERIAL LIST			
NO	PART NAME	REQD	MATERIAL-DESCRIPTION
1	FRAME	1	6061 T-6 ALUMINUM
2	FILE GUIDE	1	A2 TOOL STEEL, HARDENED
3	BOTTOM GUIDE	2	A2 TOOL STEEL, HARDENED
4	TOP GUIDE	2	A2 TOOL STEEL, HARDENED
5	PIN GUIDE	1	6061 T-6 ALUMINUM
6	SCREW	8	#8-32 X 1/2 LG BUTTON HEAD SOCKET CAP SCREWS
7	GAUGE SCREW	1	#10-32 X 1 LG STANDARD SOCKET PILOT/DOG SET SCREW
8	WASHER	1	#10 FLAT WASHER
9	WING NUT	1	#10-32 STANDARD SHAPE WING NUT
10	SCREW	2	#8-32 X 1/4 LG BUTTON HEAD SOCKET CAP SCREWS

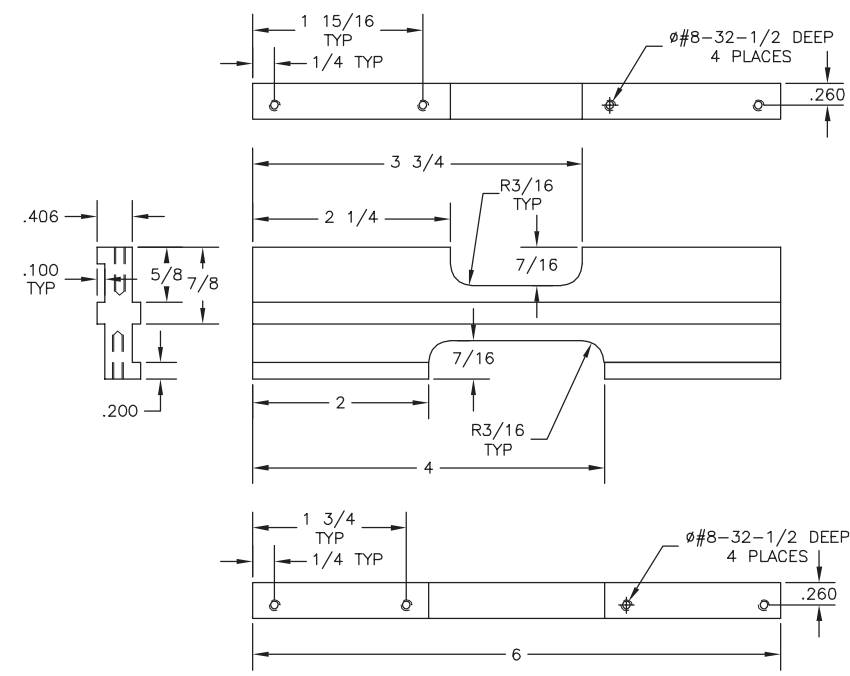


5 PIN GAUGE

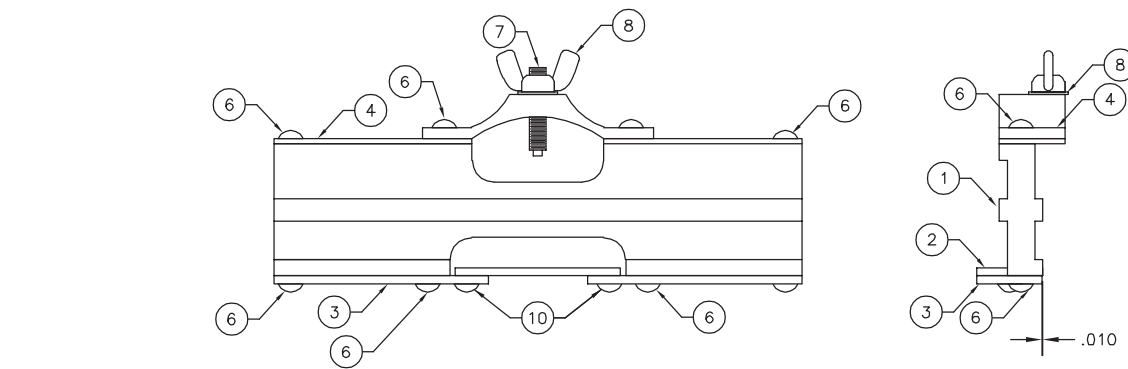


4 TOP GUIDE

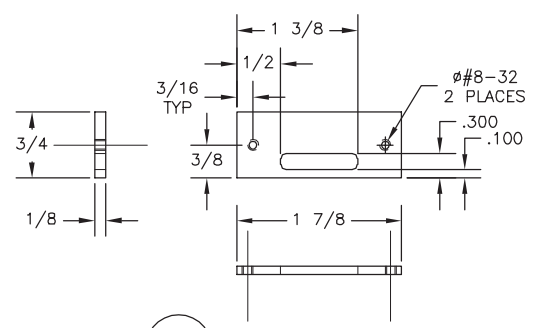
UNLESS OTHERWISE SPECIFIED: TOLERANCES: FRACTIONS +/- DECIMALS +/- ANGLES +/- DIMENSIONS ARE IN INCHES BREAK SHARP EDGES	DATE	REVISION	BY
	U.S. Department of Agriculture Forest Service <b>TECHNOLOGY &amp; DEVELOPMENT CENTER</b> Missoula, MT		
	<i>Traditional Tool Series</i> CROSSCUT SAW RAKER/PIN GAUGE		
	SCALE	1021-1.dwg	
	DATE	JAN 2005	
SHEET 1 OF 1		MTDC-1021	



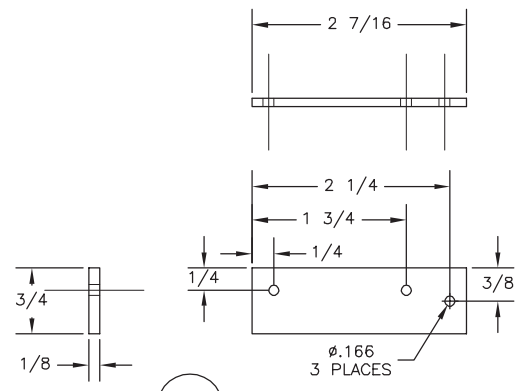
1 FRAME



RAKER GAUGE ASSEMBLY



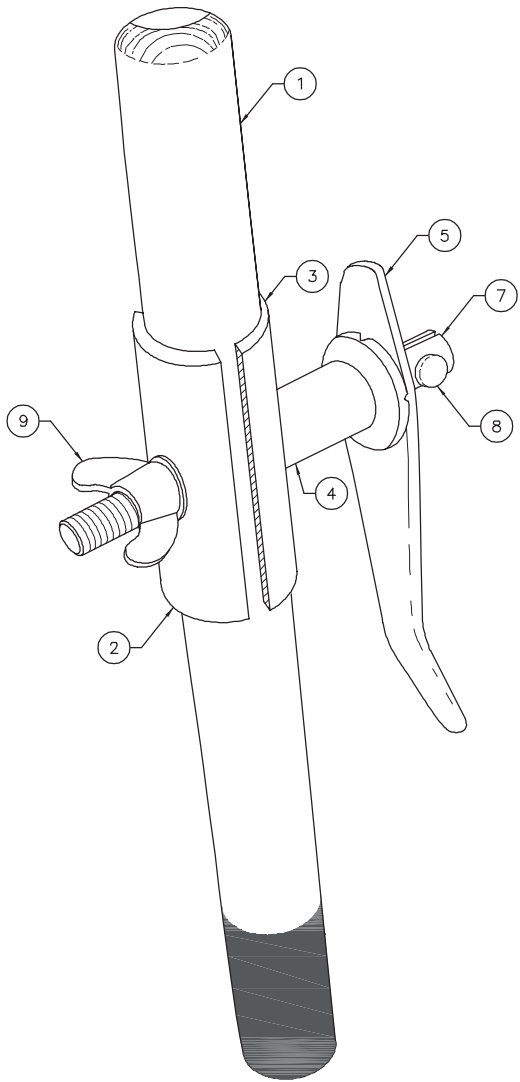
2 FILE GUIDE



3 BOTTOM GUIDE

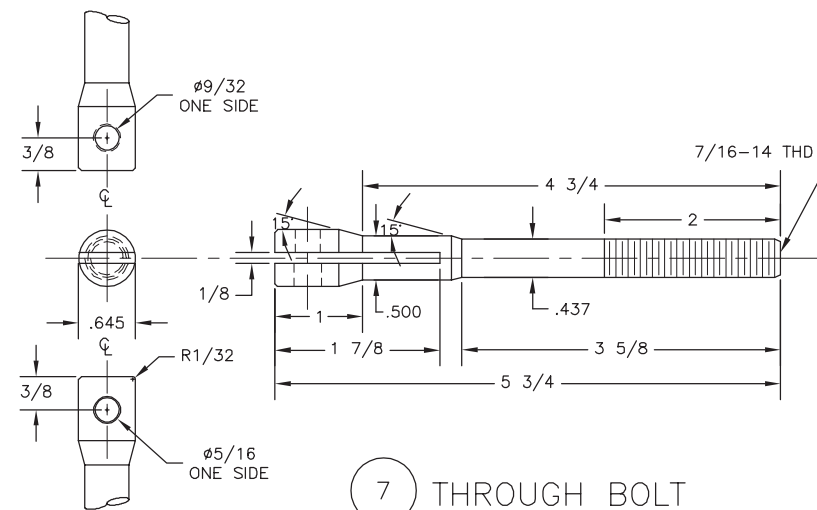
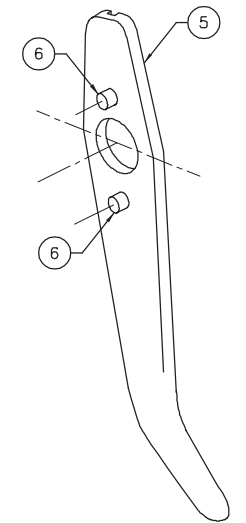
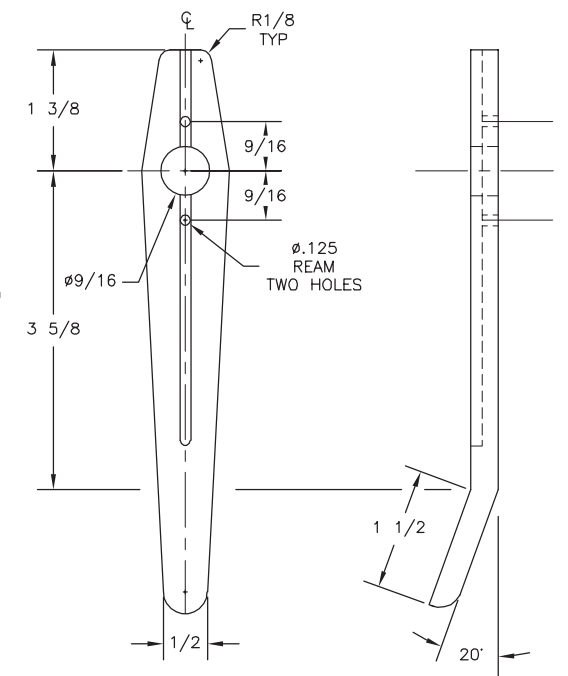
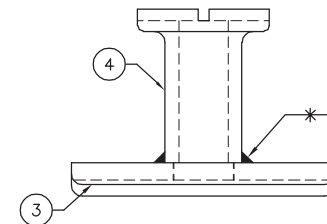
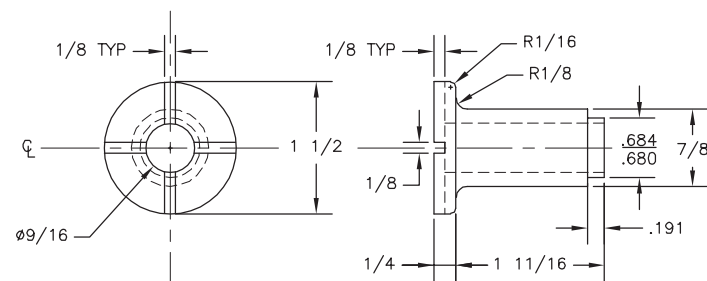
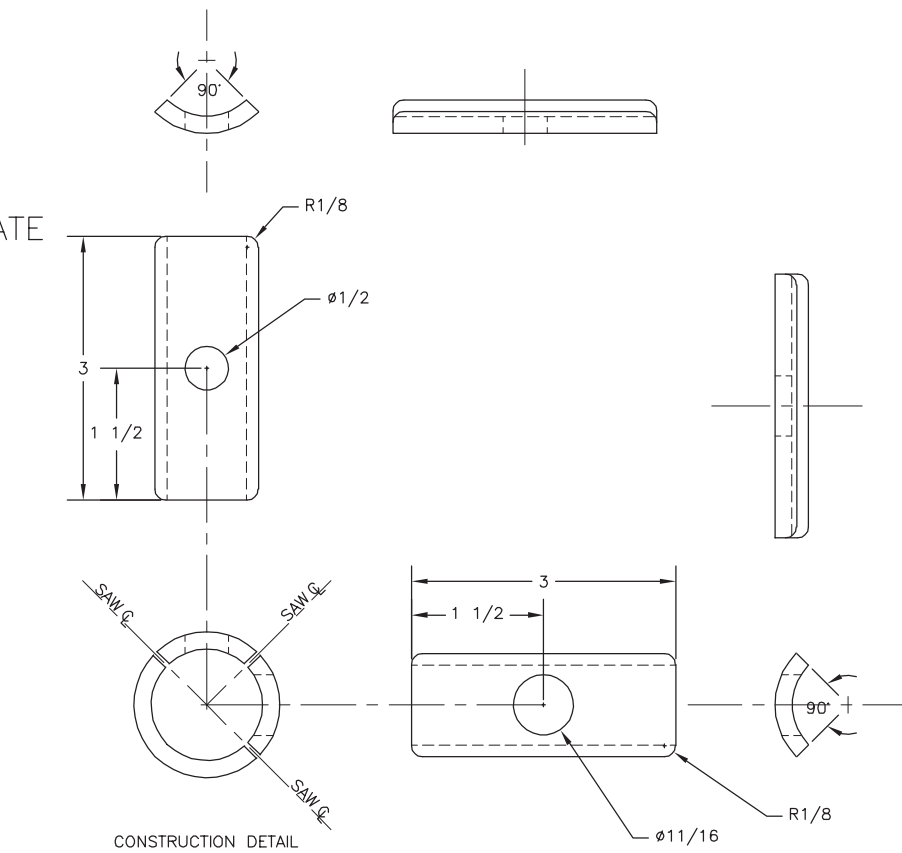
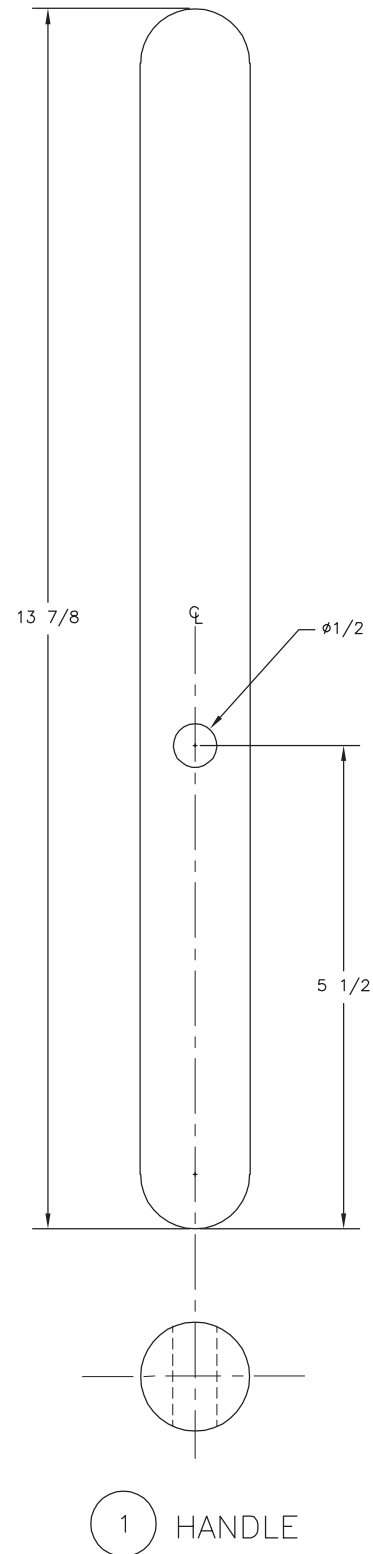
## Crosscut Saw Western Handle Bracket

THIS TOOL IS A COPY OF AN EARLY  
WESTERN HANDLE BRACKET



NO SCALE

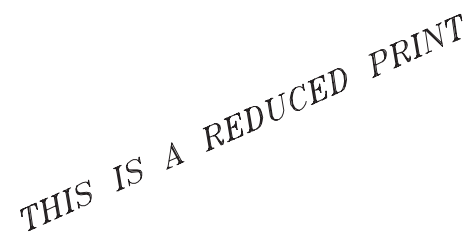
THIS IS A REDUCED PRINT



MATERIAL LIST			
NO	PART NAME	REQD	MATERIAL-DESCRIPTION
1	HANDLE	1	1-1/4 ROUND HARDWOOD
2	BACK PLATE	1	1-1/4 SCHEDULE 80 STEEL PIPE
3	FRONT PLATE	1	1-1/4 SCHEDULE 80 STEEL PIPE
4	STANDOFF	1	1-1/2 ROUND COLD ROLLED STEEL
5	HANDGUARD	1	5/16 X 1 COLD DRAWN FLAT STEEL (CASE HARDENED)
6	DOWLPIN	2	1/8 X 1/4 HARDENED STEEL McMASTER-CARR #98381A469
7	THROUGH BOLT	1	3/4 ROUND COLD ROLLED STEEL
8	RIVET	1	1/4 X 3/4 ROUND HEAD SOLID STEEL RIVET McMASTER-CARR #97300A685
9	WING NUT	1	7/16-14 ZINC-PLATED STEEL McMASTER-CARR #90866A150

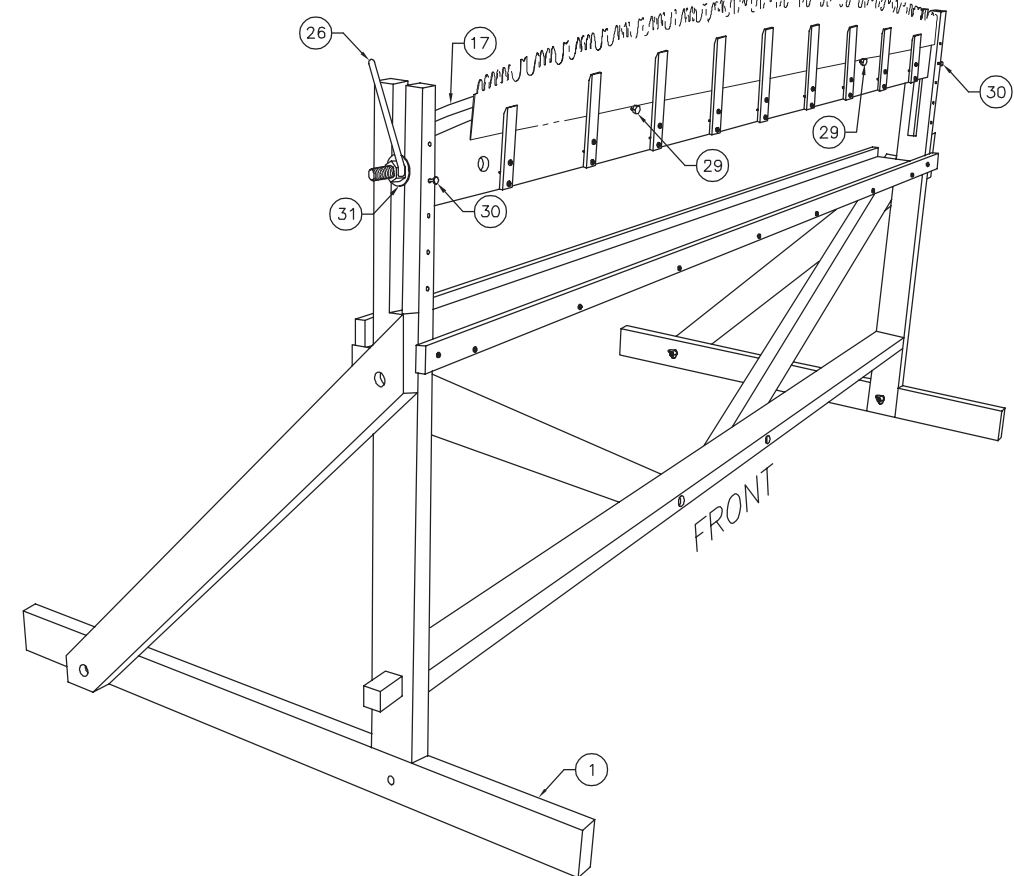
UNLESS OTHERWISE SPECIFIED		DATE	REVISION	BY
TOLERANCES: FRACTIONS    +/— DECIMALS    +/— ANGLES        +/— DIMENSIONS ARE IN INCHES BREAK SHARP EDGES		U.S. Department of Agriculture Forest Service <b>TECHNOLOGY &amp; DEVELOPMENT CENTER</b> Missoula, MT		
DRAWN KILROY/MUCCI		TITLE <i>Traditional Tool Series</i> CROSSCUT SAW WESTERN HANDLE BRACKET 1024-01.dwg		
DESIGNED KILROY				
CHECKED KILROY				
APPROVED X				
SCALE FULL				
DATE SEPT 2003		SHEET 1 OF 1		MTDC-1024

THIS TOOL IS A COPY OF AN EARLY  
EASTERN HANDLE BRACKET



UNLESS OTHERWISE SPECIFIED:		DATE	REVISION	BY
TOLERANCES:		<b>U.S. Department of Agriculture</b> <b>Forest Service</b> <b>TECHNOLOGY &amp; DEVELOPMENT CENTER</b> <b>Missoula, MT</b>		
FRACTIONS    +/—    _____				
DECIMALS       +/—    _____				
ANGLES         +/—    _____				
DIMENSIONS ARE IN INCHES BREAK SHARP EDGES				
DRAWN    KILROY/MUCCI		<i>Traditional Tool Series</i> CROSSCUT SAW EASTERN HANDLE BRACKET 1025-01.dwg		
DESIGNED KILROY				
CHECKED KILROY				
APPROVED X				
SCALE    FULL				
DATE    SEPT 2003		SHEET    1    OF    1                      MTDC-1025		

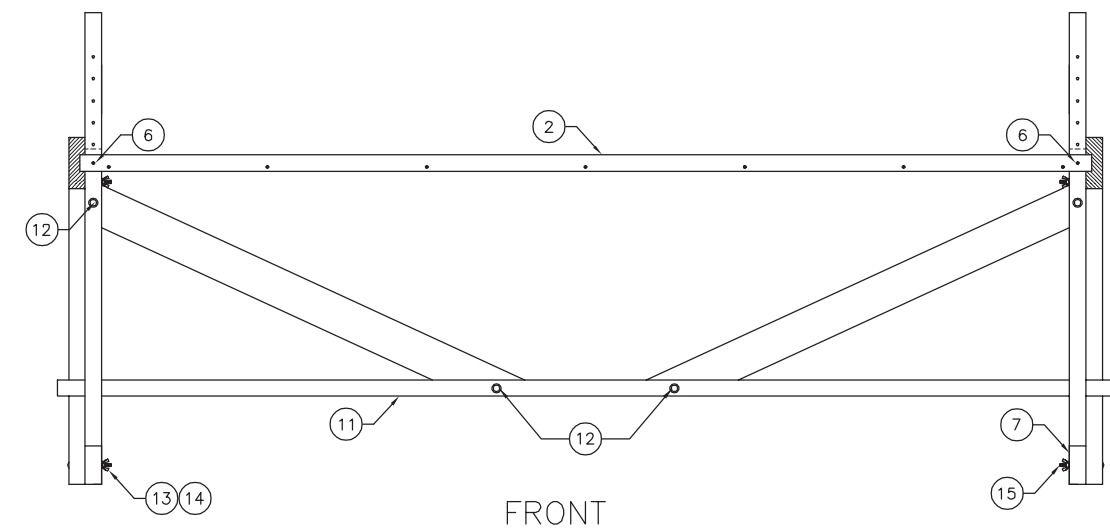
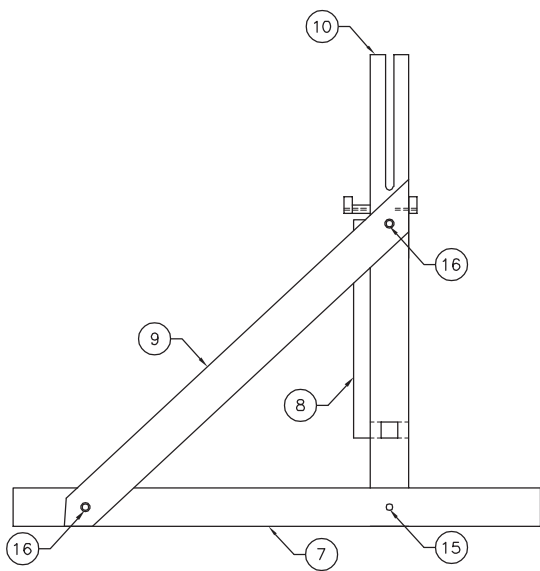
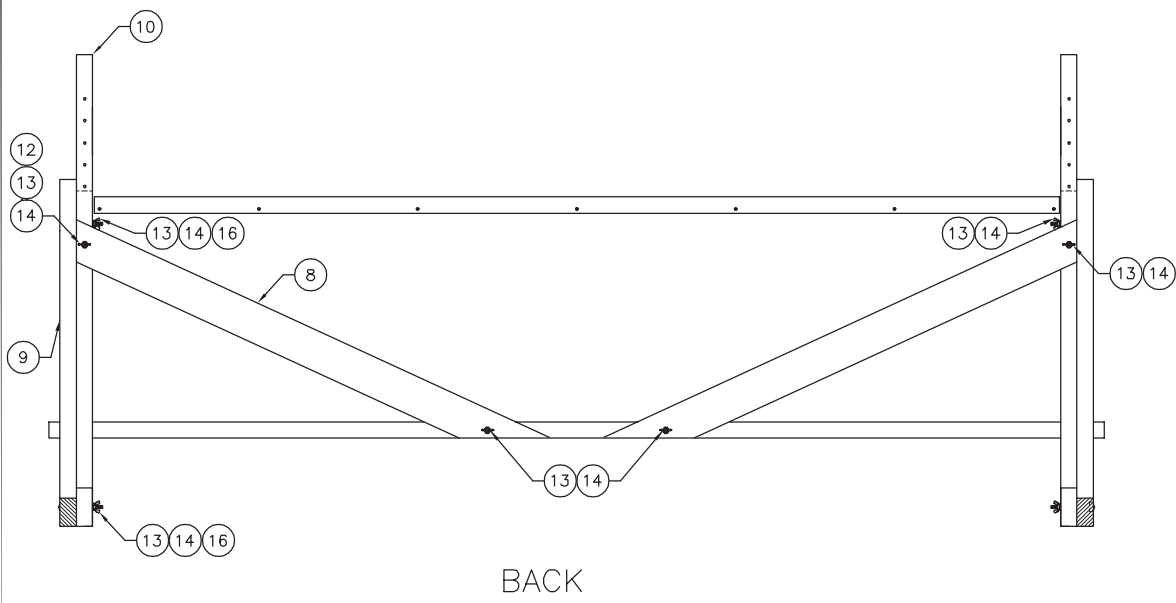




*Crosscut Saw  
Freestanding Saw Vise*  
FOR 7-FOOT SAW

MATERIAL LIST				
NO	PART NAME	REQD	MATERIAL-DESCRIPTION	SHEET
1	STAND ASSEMBLY	1	PARTS 2 THRU 16	
2	TRAY ASSEMBLY	-	PARTS 3 THRU 6	2
6	SCREW	2	SEE PART NO. 6	2
7	BASE	-	SEE PART NO. 7	2
8	BACK BRACE	-	SEE PART NO. 8	2
9	SIDE BRACE	-	SEE PART NO. 9	2
10	ARM	-	SEE PART NO. 10	2
11	FOOT RAIL	-	SEE PART NO. 11	3
12	BOLT	4	1/4-20NC X 6 LG ROUND HEAD, SQUARE NECK, CARRIAGE BOLT	
13	WASHER	8	1/4-INCH FLAT WASHER	
14	NUT	8	1/4-20NC STANDARD WING NUT	
15	BOLT	2	1/4-20NC X 2 LG ROUND HEAD, SQUARE NECK, CARRIAGE BOLT	
16	BOLT	4	1/4-20NC X 3-1/2 LG ROUND HEAD, SQUARE NECK, CARRIAGE BOLT	
17	VICE ASSEMBLY	-	PARTS 17 THRU 25	3
26	HANDLE ASSEMBLY	-	PARTS 27 & 28	3
29	BOLT	2	3/8-16NC X 2-1/2 LG HEX HEAD BOLT	
30	STOP	2	1/4-INCH X 4 LG ROUND ROD OR 60d SPIKE	
31	WASHER	2	3/4 ID X 1-1/2 OD FLAT WASHER	

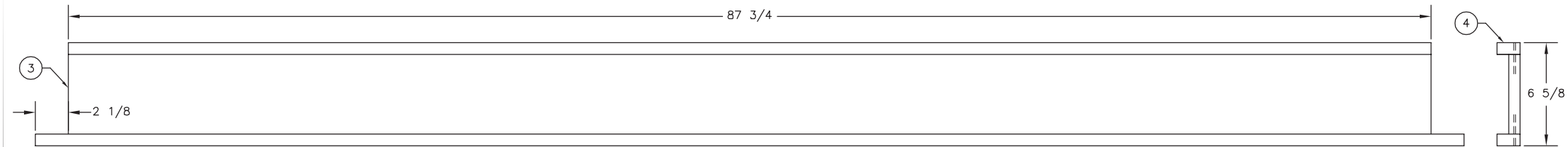
THIS IS A REDUCED PRINT



1 STAND ASSEMBLY

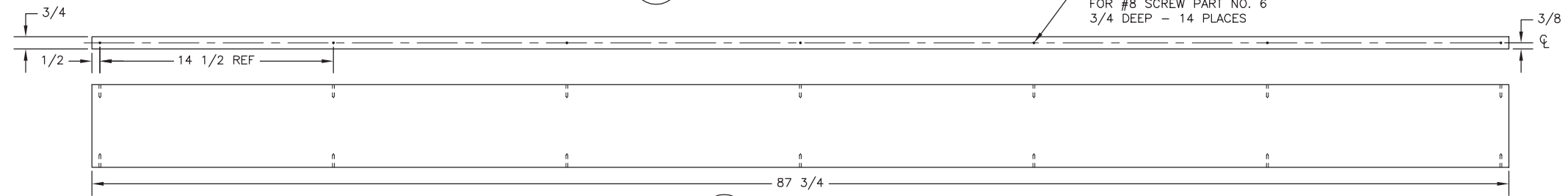
UNLESS OTHERWISE SPECIFIED		DATE	REVISION	BY
TOLERANCES:		<b>U.S. Department of Agriculture Forest Service TECHNOLOGY &amp; DEVELOPMENT CENTER Missoula, MT</b>		
FRACTIONS +/-				
DECIMALS +/-				
ANGLES +/-				
DIMENSIONS ARE IN INCHES BREAK: SHARP EDGES		<b>Traditional Tool Series</b> FREESTANDING CROSSCUT SAW VISE STAND ASSEMBLY		
DRAWN D.MUCCI				
DESIGNED -				
CHECKED -				
APPROVED R.BECKLEY		1044-01.dwg		
SCALE 1/8		SHEET 1 OF 3		
DATE APR 05		MTDC-1044		



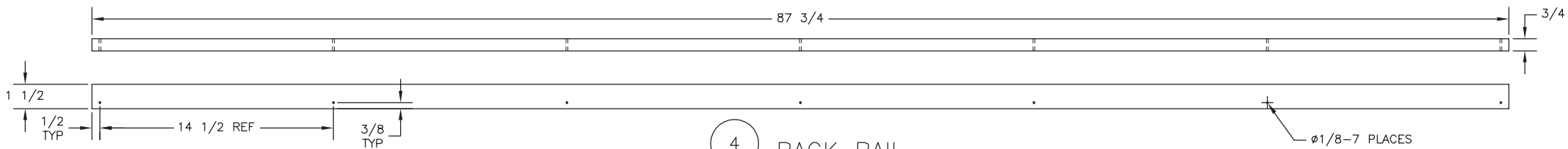


2 TRAY ASSEMBLY

DRILL PILOT HOLE  
FOR #8 SCREW PART NO. 6  
3/4 DEEP - 14 PLACES

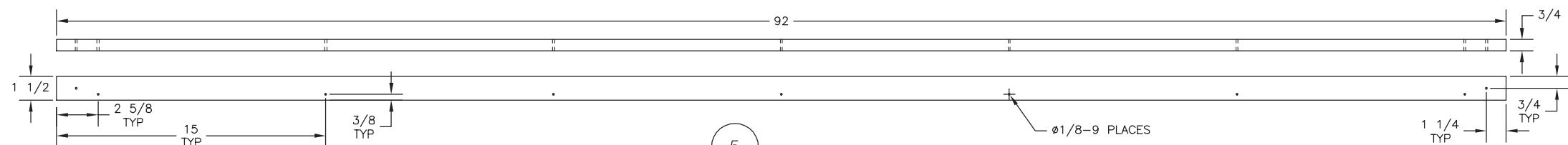


3 TRAY



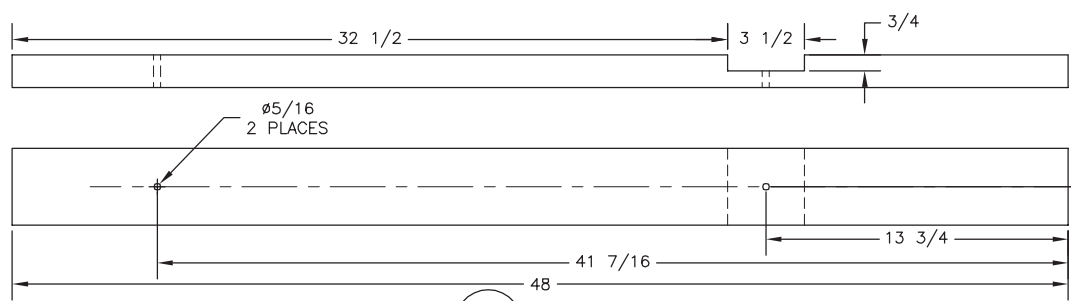
4 BACK RAIL

Ø1/8-7 PLACES

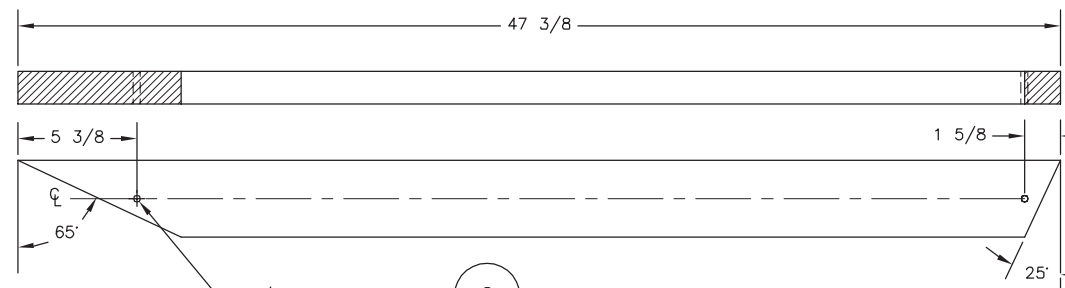


5 FRONT RAIL

Ø1/8-9 PLACES

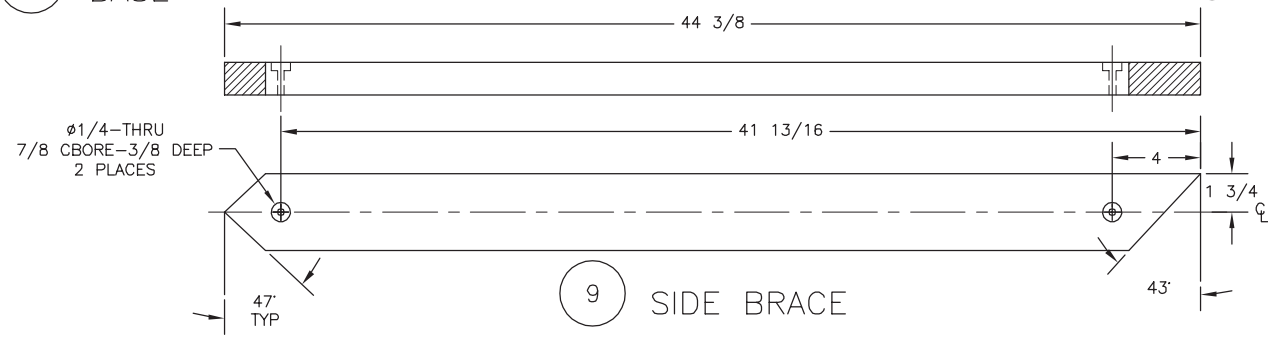


7 BASE



8 BACK BRACE

Ø5/16-2 PLACES

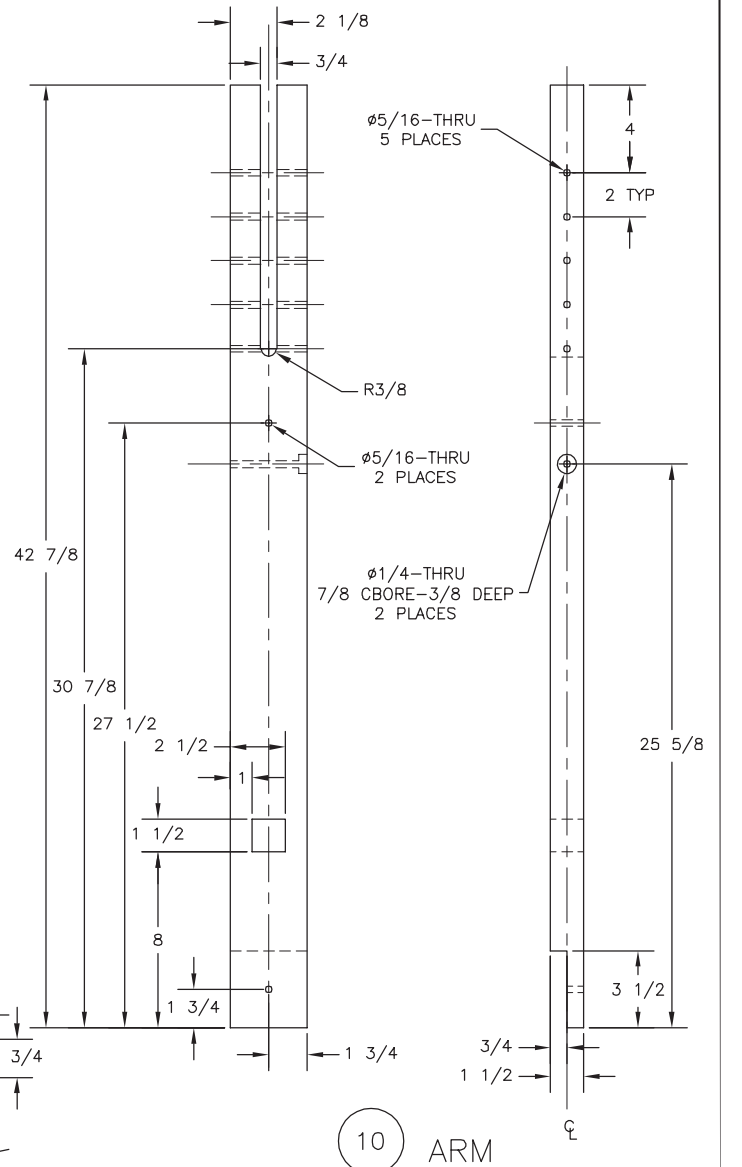


9 SIDE BRACE

Ø1/4-THRU  
7/8 CBORE-3/8 DEEP  
2 PLACES

## MATERIAL LIST

NO	PART NAME	REQD	MATERIAL-DESCRIPTION	SHEET
2	TRAY ASSEMBLY	1	PARTS 3 THRU 6	
3	TRAY	1	1 X 6 LUMBER	
4	BACK RAIL	1	1 X 2 LUMBER	
5	FRONT RAIL	1	1 X 2 LUMBER	
6	SCREW	14	#8 X 1-1/2 LG STANDARD FLATHEAD WOOD SCREW	
7	BASE	2	2 X 4 LUMBER	
8	BACK BRACE	2	2 X 4 LUMBER	
9	SIDE BRACE	2	2 X 4 LUMBER	
10	ARM	2	2 X 4 LUMBER	



Ø5/16-THRU  
5 PLACES

2 TYP

R3/8

Ø5/16-THRU  
2 PLACES

Ø1/4-THRU  
7/8 CBORE-3/8 DEEP  
2 PLACES

UNLESS OTHERWISE SPECIFIED	DATE	REVISION	BY
TOLERANCES: FRACTIONS +/- DECIMALS +/- ANGLES +/- DIMENSIONS ARE IN INCHES BREAK SHARP EDGES	U.S. Department of Agriculture Forest Service <b>TECHNOLOGY &amp; DEVELOPMENT CENTER</b> Missoula, MT		
DRAWN D.MUCCI	Traditional Tool Series		
DESIGNED -	FREESTANDING CROSSCUT SAW VISE		
CHECKED -	STAND		
APPROVED R.BECKLEY	COMPONENTS		
SCALE 1/4	1044-02.dwg		
DATE APR 05	SHEET 2 OF 3	MTDC-1044	

THIS IS A REDUCED PRINT

