

Columbia River Gorge National Scenic Area

2009 Native Plant Restoration Accomplishments

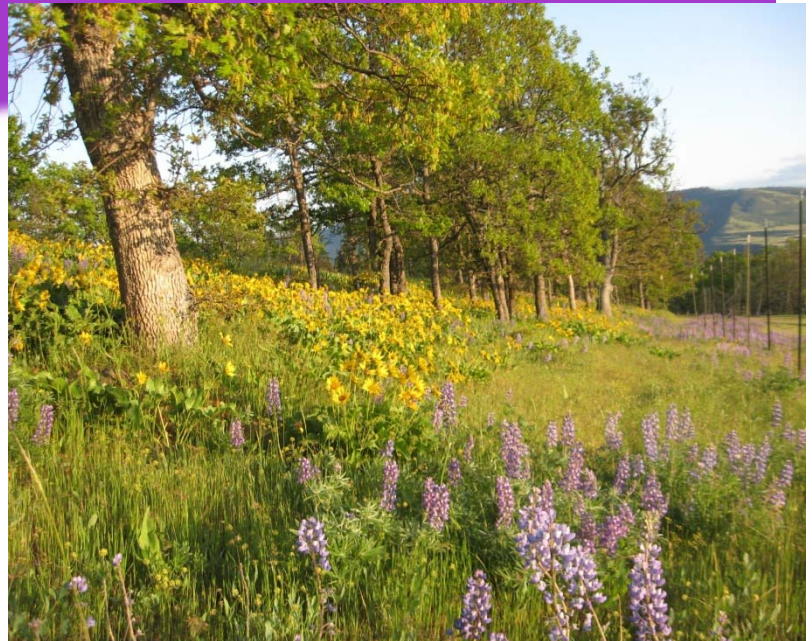
Highlights for restoration of native plants include:

1). Sandy River Delta. On-going restoration of the native riparian hardwood gallery forest . This year maintenance of over 300 acres continues and planting of 140 acres along the Columbia River with native shrubs and trees was completed. Native plantings were also completed at the 20 acre Confluence site. Most of this work has been funded through partnerships. .

2). Balfour/Klickitat. Twenty acres of this site were planted last year and some additional plantings with native grasses and forbs were completed with help from school groups. Site continues to be challenged by serious weed issues.

3). Collins Slide Area. This area, key habitat for western pond turtle, was planted with native grasses and follow-up maintenance was completed

4). Catherine Creek Natural Area. Native balsamroot and locally endemic lupine were planted in memory of Nancy Russell on the upper slopes over-looking the Gorge. This effort will hopefully begin the slow recovery of the native communities that once flourished and painted the Gorge



Native flora in the Gorge



Hydro-seeding native seeds at Balfour Restoration site

2009 Accomplishments

Acres	Funding	Activity
140 ac	NFXF	Restoration
10 ac	NFWF	Restoration
10 ac	NFVW	Restoration
5 ac	WFVW	Meadow Restoration
3 ac	NFVW	Native Planting

168 TOTAL

40 Integrated

120 Partnership

Partners/Cooperators

COE, BPA, WDFW, FOG, Ashcreek Forest Mgt, LCREP, OR State, CGEI.

Contact: Robin Dobson 541-308-1717
Mark Kreiter 541-308-1744



Columbia River Gorge NSA

902 Wasco Ave., Suite 200
Hood River, OR 97031