

United States Department of Agriculture

Forest Service

Arizona, New Mexico

Service

America's Great Outdoors

DEC 2019

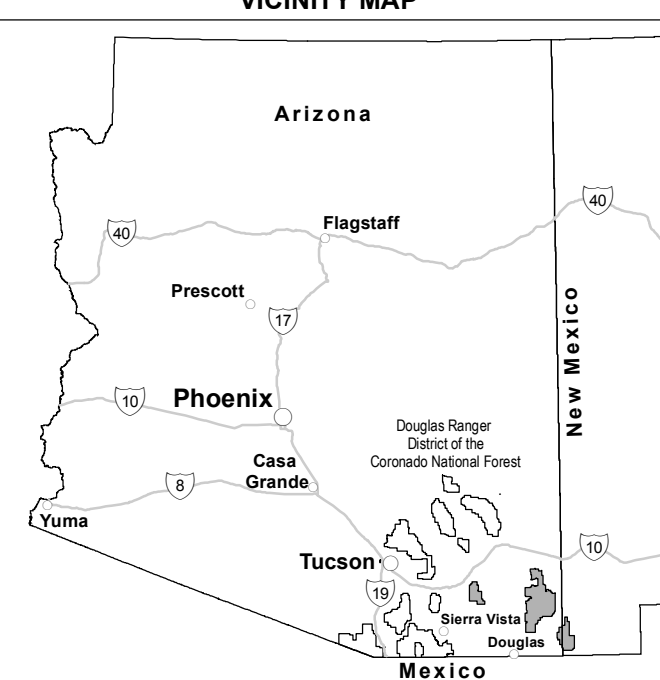
Coronado National Forest

District

Douglas Ranger

Use Map

Motor Vehicle



INFORMATION SOURCES

Coronado National Forest
Supervisor's Office
360 W. Congress
Tucson, AZ 85701
(520) 382-8300
TTY: (520) 674-4884
Or Visit:
www.fs.usda.gov/coronado

Safford Ranger District
711 4th Ave. So. D
Safford, AZ 85446
(520) 424-4150
TTY: (520) 424-4150

Douglas Ranger District
1192 W. Saddlebrook Rd.
Douglas, AZ 85607
(520) 364-3446
TTY: (520) 364-3446

Sierra Vista Ranger District
4070 South Avenida Sarcino
Heedford, AZ 85915
(520) 378-2311
TTY: (520) 378-2311

Nogales Ranger District
303 Old Tucson Rd.
Nogales, AZ 85621
(520) 281-2286
Coronado National Forest
Dispatch: (520) 202-2710

Arizona Game and Fish Department
(902) 942-3000
www.azgfd.gov

Arizona State Legislature Traffic Laws:
www.azleg.gov/azlegDetail?title=28

Pima County Sheriff
1760 E. Beaman Highway
Tucson, AZ 85714-1758
(520) 351-4000

In the event of emergency call 911

tread lightly!
LEAVING A GOOD IMPRESSION

Travel and recreate with minimum impact.
Respect the environment and the rights of others.
Educate yourself plan and prepare before you go.
Allow for future use of the outdoors by leaving it better than you found it.
Discover the rewards of responsible recreation.
For more information on Tread Lightly!, go to www.treadlightly.org or call 1-800-966-9800.

The U. S. Department of Agriculture (USDA) prohibits discrimination in all its programs and activities on the basis of race, color, national origin, age, disability, and where applicable, sex, marital status, familial status, parental status, religion, sexual orientation, genetic information, political beliefs, reprisal, or because all or part of an individual's income is derived from any public assistance program. (Not all prohibited bases apply to all programs.) Persons with disabilities who require alternative means for communication of program information (Braille, large print, audiotape, etc.) should contact USDA's TARGET Center at (202) 720-2600 (voice and TDD). To file a complaint of discrimination, write to USDA, Director, Office of Civil Rights, 1400 Independence Avenue, S.W., Washington, D.C. 20250-9410, or call (800) 795-3272 (voice) or (202) 720-6382 (TDD). USDA is an equal opportunity provider and employer.

OF THIS MAP

Forest Supervisor, Coronado National Forest

It is the responsibility of the user to acquire the current MVUM. This MVUM shows the National Forest System roads, National Forest System trails, and the areas on National Forest System lands in the Coronado National Forest that are designated for motor vehicle use pursuant to 36 CFR 212.51. This MVUM also identifies the vehicle classes allowed on each route and in each area; and any seasonal restrictions that apply on those routes and in those areas.

Designation of a road, trail, or area for motor vehicle use by a particular class of vehicle under 36 CFR 212.51 should not be interpreted as encouraging or inviting use or implying that the road, trail, or area is possible, actively maintained, or safe for travel. Motor vehicle designations include parking along designated routes and at facilities associated with designated routes when it is safe to do so and when not causing damage to National Forest System resources. Seasonal weather conditions and natural events may render designated roads and trails impassable for extended periods. Designated areas may contain dangerous or impassable terrain. Many designated roads and trails may be passable only by high-clearance vehicles or four-wheel-drive vehicles. Maintenance of designated roads and trails will depend on available resources, and many may receive little maintenance.

This motor vehicle use map identifies those roads, trails, and areas designated for the motor vehicle use under 36 CFR 212.51 for the purpose of enforcing the prohibition at 36 CFR 261.13. This is a limited purpose. The other public roads are shown for information and navigation purposes only and are not subject to designation under the Forest Service travel management regulation.

These designations apply only to National Forest System roads, National Forest System trails, and areas on National Forest System lands.

PROHIBITIONS

It is prohibited to possess or operate a motor vehicle on National Forest System lands on the Coronado National Forest other than in accordance with these designations (36 CFR 261.13)

Violators of 36 CFR 261.13 are subject to a fine of up to \$5,000, imprisonment for up to 6 months, or both (18 U.S.C. 3571(e)). This prohibition applies regardless of the presence or absence of signs.

This map does not display nonmotorized uses, over-snow uses, or other facilities and attractions on the Coronado National Forest. Obtain forest visitor information from the local national forest office.

Designated roads, trails and areas may also be subject to temporary, emergency closures. As a visitor, you must comply with signs notifying you of such restrictions. A national forest may issue an order to close a road, trail, or area on a temporary basis to protect the life, health, or safety of forest visitors or the natural or cultural resources in these areas. Such a temporary and/or emergency closures are consistent with the Travel Management Rule (36 CFR 212.52 (b)), 36 CFR 261 support B).

The designation "road or trail open to all motor vehicles" does not supersede State traffic law.

OPERATOR RESPONSIBILITIES

Operating a motor vehicle on National Forest System roads, National Forest System trails, and in areas on National Forest System lands carries a greater responsibility than operating that vehicle in a city or other developed setting. Not only must you know and follow all applicable traffic laws, you need to show concern for the environment as well as other forest users. The misuse of motor vehicles can lead to the temporary or permanent closure of any designated road, trail, or area. As a motor vehicle operator, you are also subject to State traffic law, including State requirements for licensing, registration, and operation of the vehicle in question.

Motor vehicle use, especially off-highway vehicle use, involves inherent risks that may cause property damage, serious injury, and possibly death to participants. Drive cautiously and anticipate rough surfaces and features, such as snow, mud, vegetation and water crossings common to remote driving conditions. By your participation, you voluntarily assume full responsibility for these damages, risks, and dangers. Take care at all times to protect yourself and those under your responsibility.

Much of the Coronado National Forest is remote. Medical assistance may not be readily available. Cellular telephones do not work in many areas of the Coronado National Forest. Take adequate food, water, first aid supplies, and other equipment appropriate for the conditions and expected weather.

ALWAYS REMEMBER TO RESPECT PRIVATE LAND! PROTECT YOUR PRIVILEGE. STAY ON DESIGNATED ROADS AND TRAILS AND IN DESIGNATED AREAS.

Read and understand this map in its entirety. If you have questions, please contact the Coronado National Forest for clarification.


As a motor vehicle operator on a National Forest System road, trail, or area you must comply with this map, as well as all Federal, State, and local laws and regulations. Compliance with these rules is your responsibility.

Other options for viewing or using this map include:

- View or download a copy of this map using your computer.
- Download a copy of this map to your Android or iOS smartphone or tablet, and use it as a live, navigational aid when traveling on MVUM-designated routes.
- Download a representation of this map to your Garmin GPS receiver, and use it as a live, navigational aid when travelling on MVUM-designated routes.

For more information on electronic travel aids, please visit the following website:
<http://go.usa.gov/Pa>

For website to electronic maps, please scan the QR Code below with your smartphone or tablet or visit the following website:
<http://tinyurl.com/wgk0u9>



Although the map content we provide is free, your wireless carrier may assess data service charges.

LEGEND

Roads Open to Highway Legal Vehicles

Roads Open to All Vehicles

Seasonal Designation (See Table)

Trails Open to All Vehicles

Dispersed Camping, Both Sides

Interstate

Highways, U.S. State

Other Public Roads

Short Route Identifier

FS Campground

Information Site

Peaks

Forest or Unit Boundary

National Forest System Lands

Non-National Forest System Lands within the National Forest

Wilderness Areas

Political Boundary

Township and Range Lines

Section Lines

0 0.5 1 2 3 4 Miles

N

EXPLANATION OF LEGEND ITEMS

Roads Open to Highway Legal Vehicles Only:

These roads are open only to motor vehicles licensed under State law for general operation on all public roads within the state.

Roads Open to All Vehicles:

These roads are open to all motor vehicles, including smaller off-highway vehicles that may not be licensed for highway use (but not to oversize or overweight vehicles under State traffic law).

Seasonal Designation:

This symbol, used in conjunction with one of the other road or trail symbols, indicates that the road or trail is open only during certain portions of the year. Refer to Seasonal and Special Designation Table for further instructions.

Trails Open to All Vehicles:

These trails are open only to all motor vehicles, including both highway legal and nonhighway legal vehicles.

Dispersed Camping:

Dispersed Camping, Both Sides
This symbol is used along with a designated road or trail to indicate limited cross-country motor vehicle use within a specific distance of that route, solely for the purpose of dispersed camping. The dots indicate where this activity is permitted. They may be on both sides of the route. Refer to the Dispersed Camping Table for specifics.

Other Public Roads and Trails:

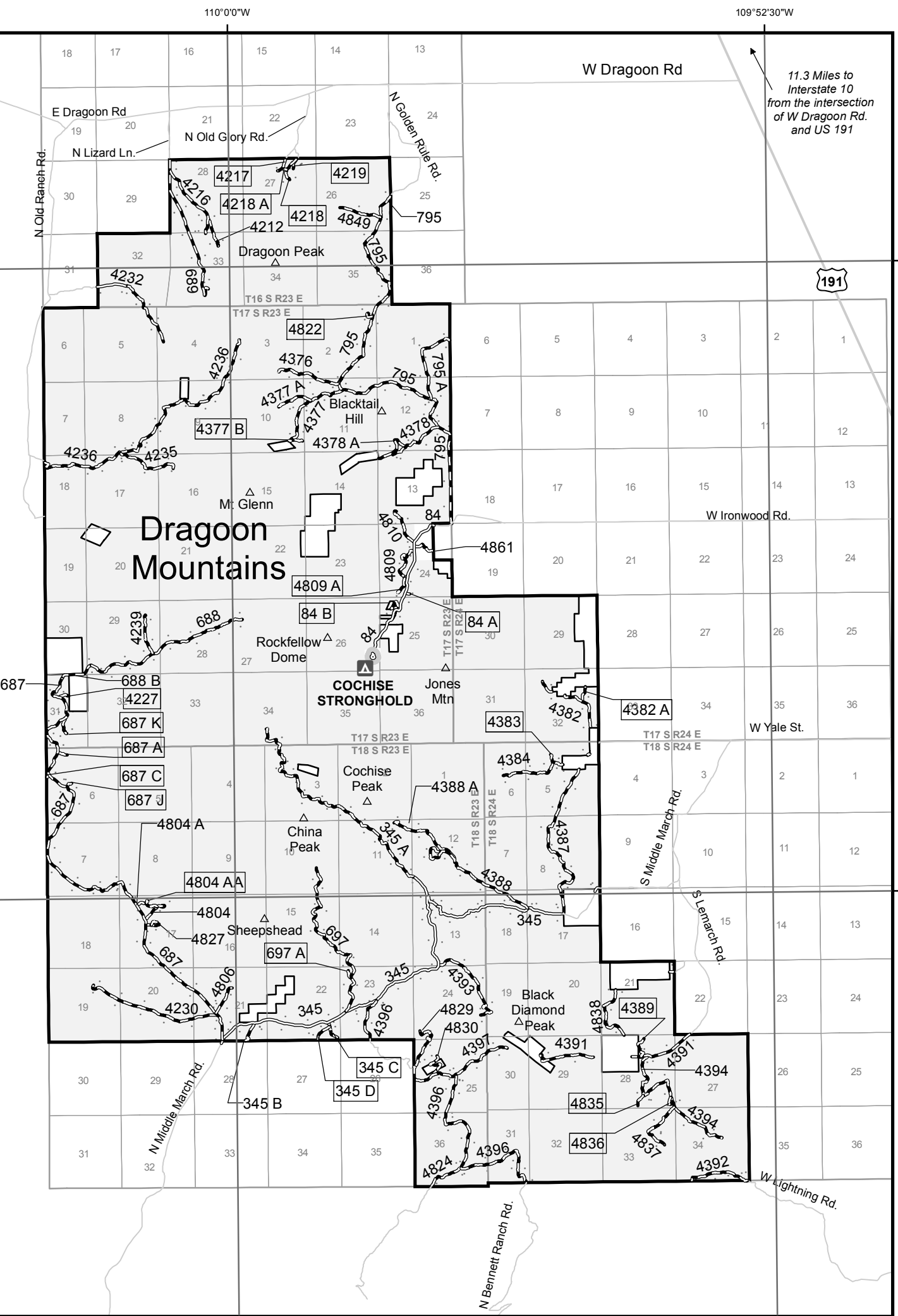
Interstate
Highways, U.S. State
Other Public Roads

These symbols are used to show routes the Forest Service does not have jurisdiction over and has not designated for motorized use. These symbols are part of the reference layers showing connections to towns and cities outside the forest boundary.

Short Route Identifier:

70333

This symbol is used for roads that are too short to show a symbol type on the map. The symbol contains the number of the road or trail. Users should refer to the corresponding number in the Short Route Table for designation information.



Roads Too Short to Be Seen Clearly on the Map		
Road Number	Route Designation	Length in Feet
345 C	Roads Open to All Vehicles	1,484
345 D	Roads Open to All Vehicles	1,389
357 B	Roads Open to All Vehicles	1,167
357 C	Roads Open to All Vehicles	824
4219	Roads Open to All Vehicles	907
42 DA	Roads Open to All Vehicles	517
42 DC	Roads Open to All Vehicles	549
42 DD	Roads Open to All Vehicles	2,022
42 G	Roads Open to Highway Legal Vehicles Only	1,008
42 H	Roads Open to Highway Legal Vehicles Only	1,057
4217	Roads Open to All Vehicles	1,187
4218	Roads Open to All Vehicles	1,501
4218 A	Roads Open to All Vehicles	439
4219	Roads Open to All Vehicles	1,769
4227	Roads Open to All Vehicles	792
4248 A	Roads Open to All Vehicles	1,003
4260	Roads Open to All Vehicles	156
4261	Roads Open to All Vehicles	1,115
4274	Roads Open to All Vehicles	509
4276	Roads Open to All Vehicles	686
4277	Roads Open to All Vehicles	1,267
4288	Roads Open to All Vehicles	1,243
4298	Roads Open to All Vehicles	337
4303 A	Roads Open to All Vehicles	1,288
4310	Roads Open to All Vehicles	826
4315	Roads Open to All Vehicles	635
4316	Roads Open to All Vehicles	793
4324 A	Roads Open to All Vehicles	792
4338	Roads Open to All Vehicles	787
4341	Roads Open to All Vehicles	502
4346	Roads Open to All Vehicles	1,082
4352	Roads Open to All Vehicles	482
4358	Roads Open to All Vehicles	486
4360	Roads Open to All Vehicles	702
4365	Roads Open to All Vehicles	982
4367	Roads Open to All Vehicles	766
4377 B	Roads Open to All Vehicles	259
4382 A	Roads Open to All Vehicles	1,152
4383	Roads Open to All Vehicles	1,396
4389	Roads Open to All Vehicles	1,167
4804 A	Roads Open to All Vehicles	347
4809 A	Roads Open to All Vehicles	1,473
4822	Roads Open to All Vehicles	708
4835	Roads Open to All Vehicles	859
4836	Roads Open to All Vehicles	691
4845	Roads Open to All Vehicles	886
687 A	Roads Open to All Vehicles	723
687 C	Roads Open to All Vehicles	248
687 J	Roads Open to All Vehicles	488
687 K	Roads Open to All Vehicles	1,278
697 A	Roads Open to All Vehicles	628
721 AA	Roads Open to All Vehicles	280
721 B	Roads Open to All Vehicles	554
722 C	Roads Open to All Vehicles	671
84 A	Roads Open to All Vehicles	338
84 B	Roads Open to All Vehicles	1,241

Dispersed Camping				
Route Number		Distance /Side of Route	Vehicle Type	Dates Allowed
41, 42, 42 A, 42 B, 42 C, 42 D, 42 DA, 42 DC, 42 DD, 42 E, 42 F, 42 G, 42 H, 63, 74, 74 E, 74 F, 84, 84 A, 84 B, 249, 250, 255, 259, 311, 314, 317, 317 A, 317 B, 334, 334 A, 334 B, 339, 339 A, 339 B, 341, 341 A, 345, 345 A, 345 B, 345 C, 345 D, 356, 357, 357 B, 357 C, 360, 376, 628, 632, 685, 686, 687, 687 A, 687 C, 687 J, 687 K, 688, 688 B, 689, 697, 697 A, 700, 700 A, 701, 702, 702 A, 703, 704, 705, 705 A, 706, 707, 709, 713, 717, 718, 719, 719 A, 721, 721 A, 721 AA, 721 B, 722, 722 C, 722 D, 723, 724, 725, 795, 795 A, 896, 4212, 4216, 4217, 4218, 4218 A, 4219, 4222, 4224, 4225, 4227, 4230, 4232, 4235, 4236, 4239, 4241, 4242, 4244, 4245, 4246, 4248, 4249 A, 4249, 4250, 4251, 4252, 4253, 4254, 4255, 4257, 4258, 4259, 4260, 4261, 4266, 4268, 4272, 4274, 4276, 4277, 4277 A, 4282, 4283, 4286, 4288, 4292, 4293, 4293 A, 4298, 4299, 4300, 4301, 4303, 4303 A, 4305, 4310, 4314, 4315, 4316, 4320, 4322, 4323, 4324, 4324 A, 4325, 4326, 4326 A, 4327, 4327 A, 4328, 4329, 4330, 4333, 4335, 4336, 4338, 4339, 4341, 4342, 4345, 4346, 4348, 4349, 4350, 4351, 4352, 4353, 4353 A, 4354, 4355, 4356, 4356 A, 4357, 4357 A, 4357 B, 4358, 4359, 4359 A, 4359 A, 4360, 4361, 4362, 4363, 4364, 4375, 4376, 4377, 4377 B, 4378, 4378 A, 4382, 4382 A, 4383, 4384, 4387, 4388, 4388 A, 4389, 4391, 4392, 4393, 4394, 4396, 4397, 4804, 4804 A, 4804 AA, 4806, 4809, 4809 A, 4810, 4811, 4812, 4822, 4824, 4827, 4829, 4830, 4835, 4836, 4837, 4838, 4845, 4849, 4850, 4850 A, 4852, 4853, 4854, 4858, 4861, 4866, 7181, 7822		300' or less on route	Same as permitted on route	Same as permitted on route